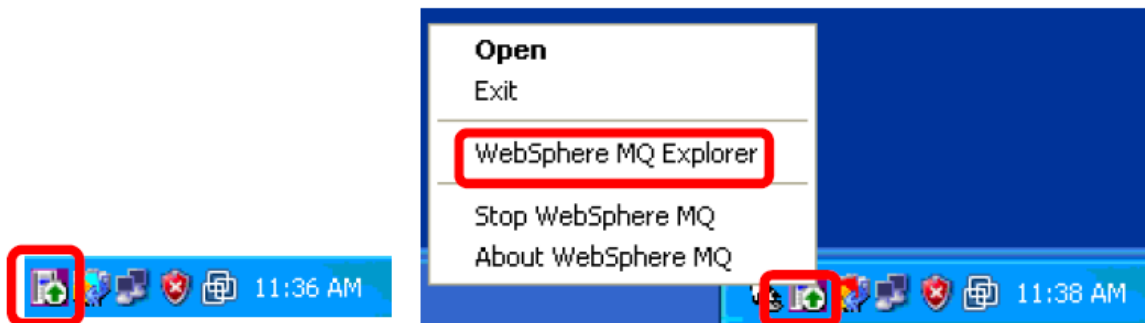
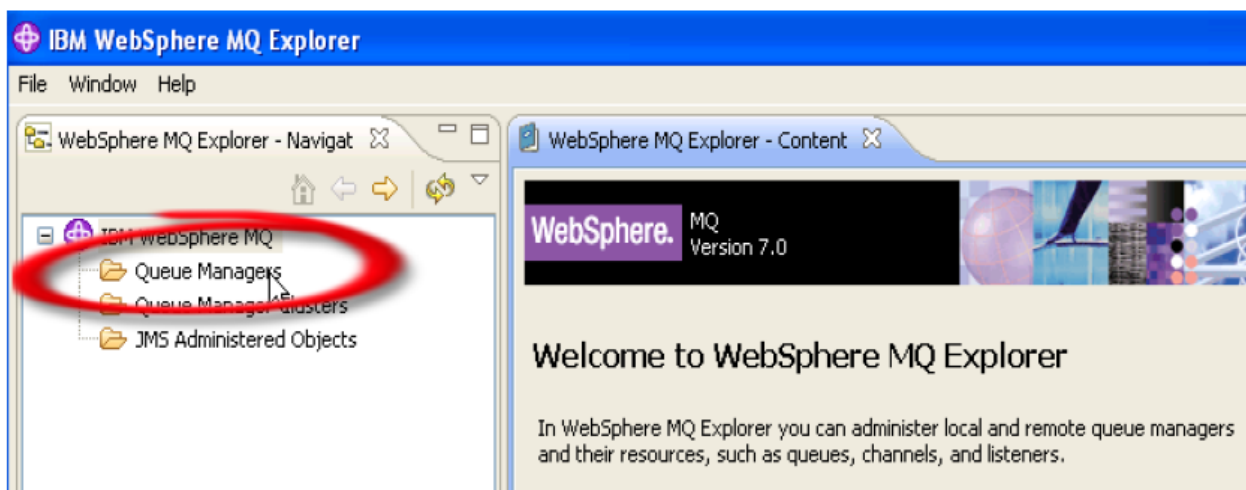


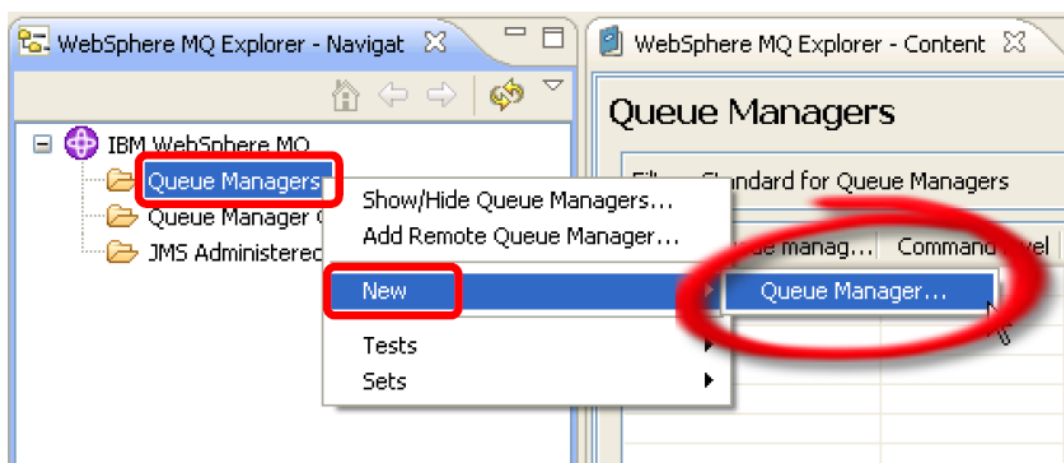
1. Abrir el MQ Explorer



2. Abrir el Window MQ Explorer Navigation e ir a Queue Managers



3. Clic derecho en Queue Manager >> New >> Queue Manager



4. Ingresar los datos del Queue Manager

Name: WMQ7

Dead-letter queue: SYSTEM.DEAD.LETTER.QUEUE

Create Queue Manager

Queue Manager

Enter basic values (Step 1)

Queue manager name: WMQ7

Make this the default queue manager

Default transmission queue:

Dead-letter queue: SYSTEM.DEAD.LETTER.QUEUE

Max handle limit: 256

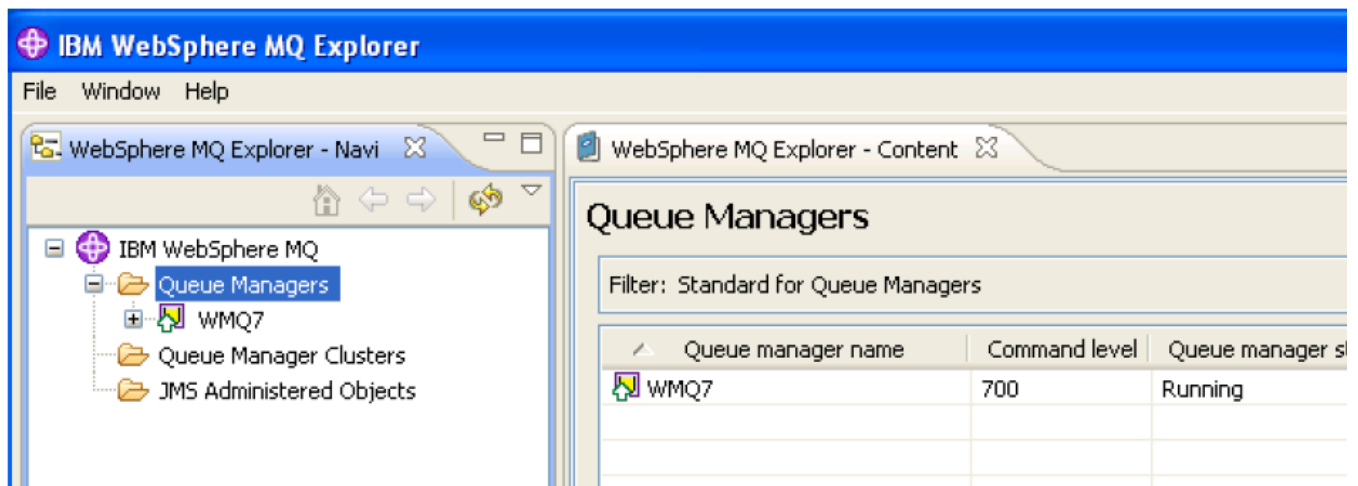
Trigger interval: 999999999

Max uncommitted messages: 10000

< Back Next > Finish Cancel



5. Ahora ya tenemos el Queue Manager creado.



Julio Pari (IT Architect IBM)



Si te ha interesado este artículo y deseas un apoyo o asesoría en algún requerimiento, envíame un mensaje a: (info@juliopari.com) o sino a través de LinkedIn: <https://www.linkedin.com/in/juliopari/>