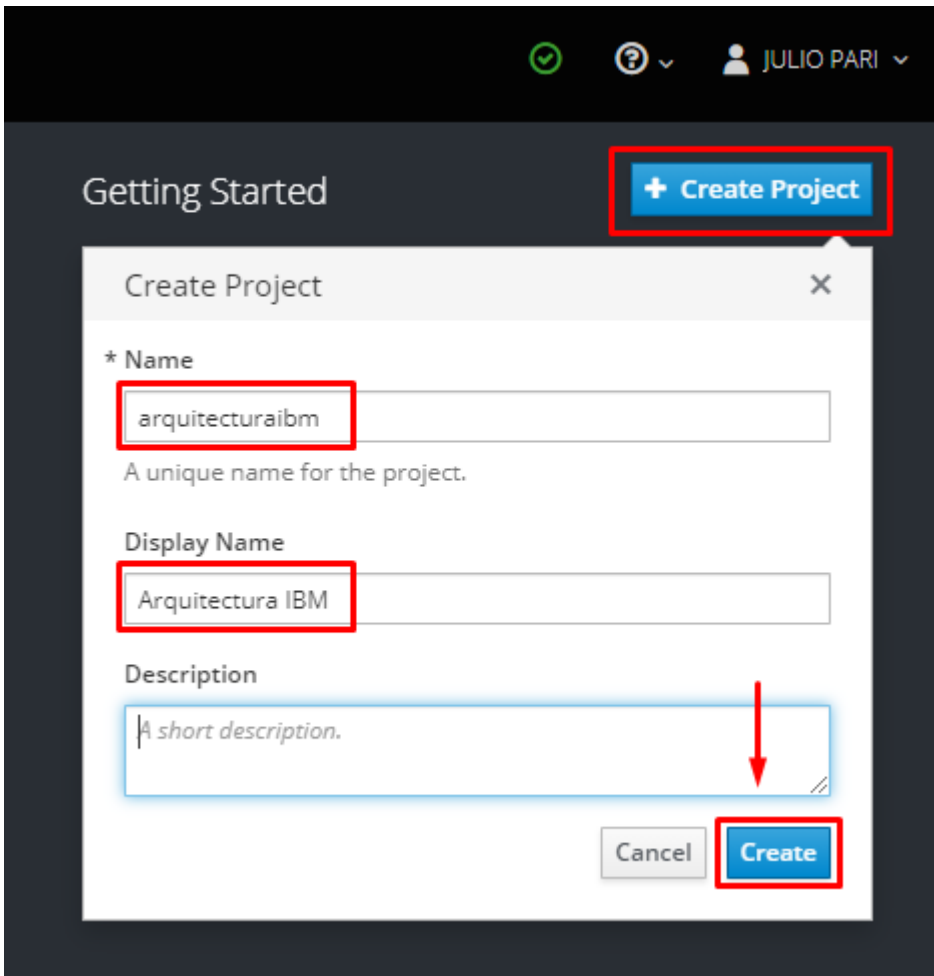
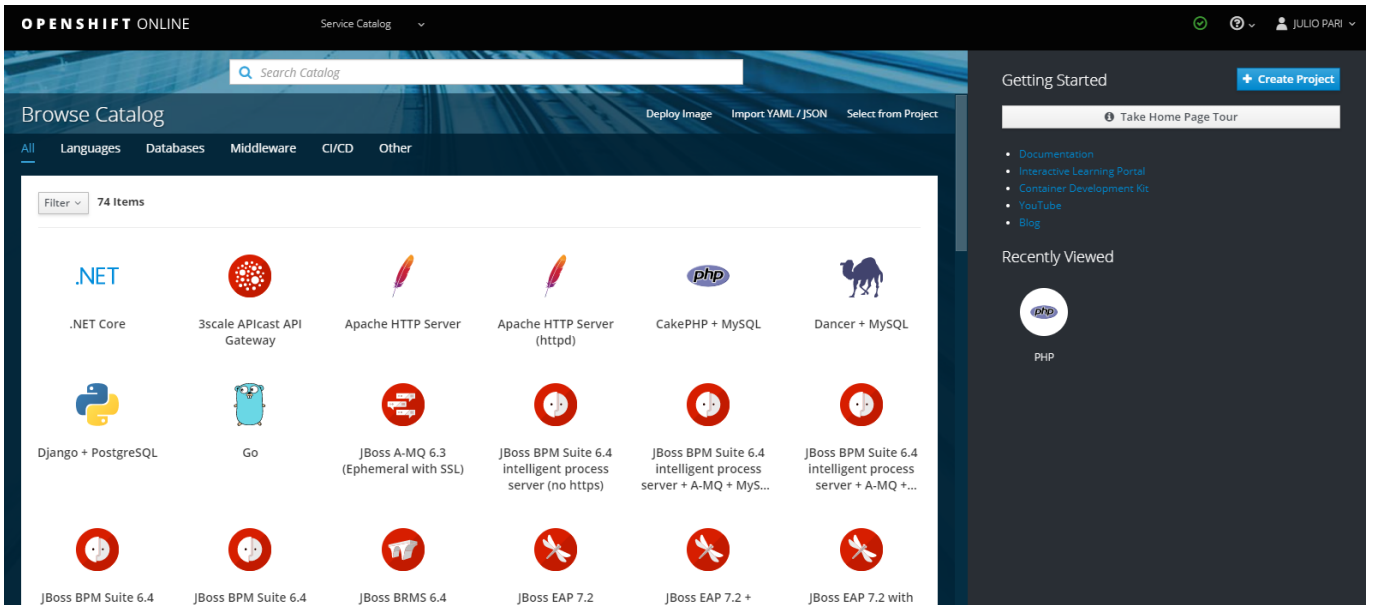
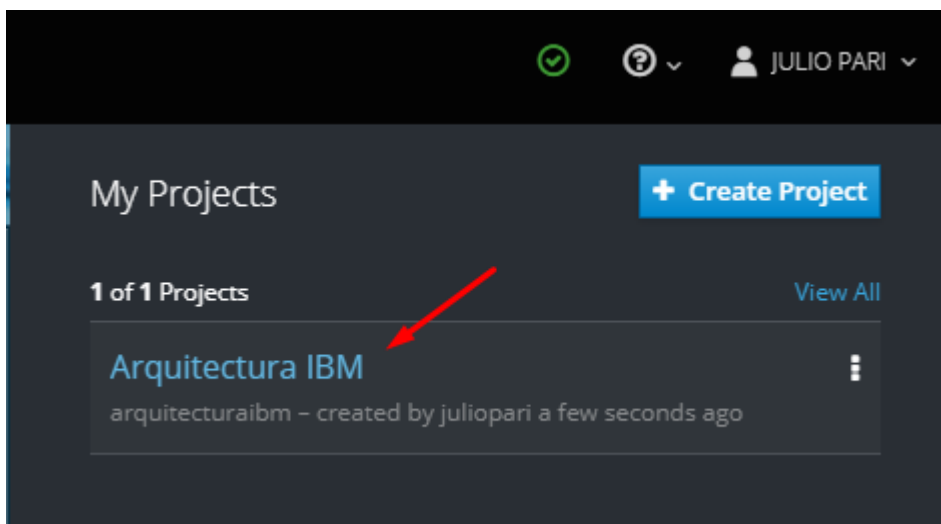
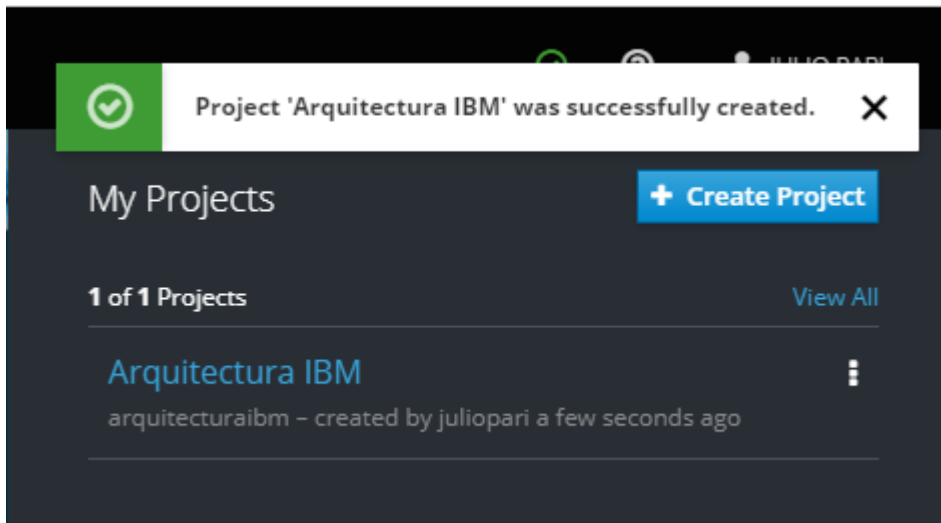


1. Ingresar a la consola openshift y crear un proyecto «arquitecturaibm»





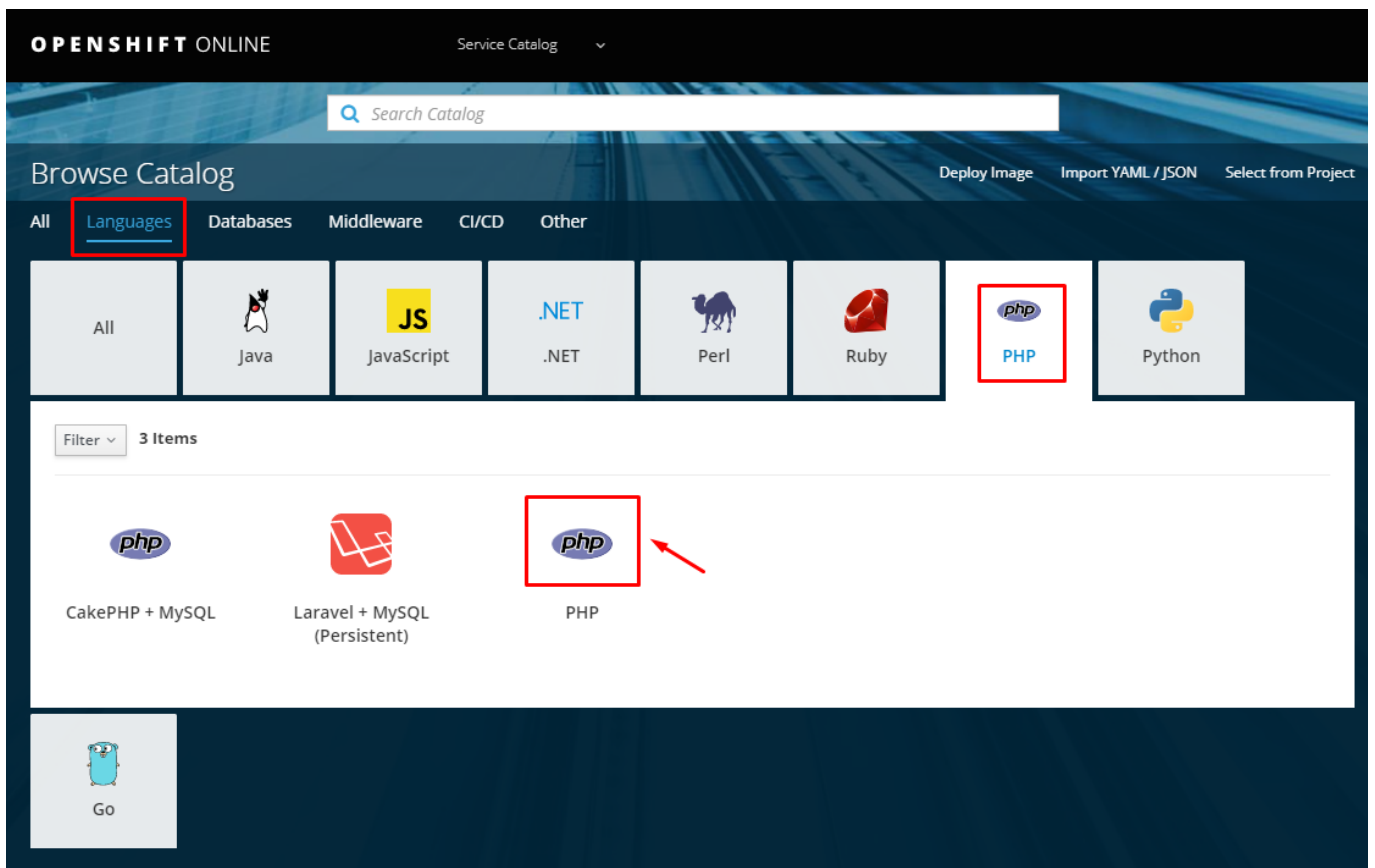
_2. Luego de crear el proyecto, vamos a desplegar una aplicación web **html/css/js/bootstrap**, aquí una vista previa de la página web, el código fuente está en un repositorio de github: <https://github.com/juliopari/bootstrap-web-consulting>

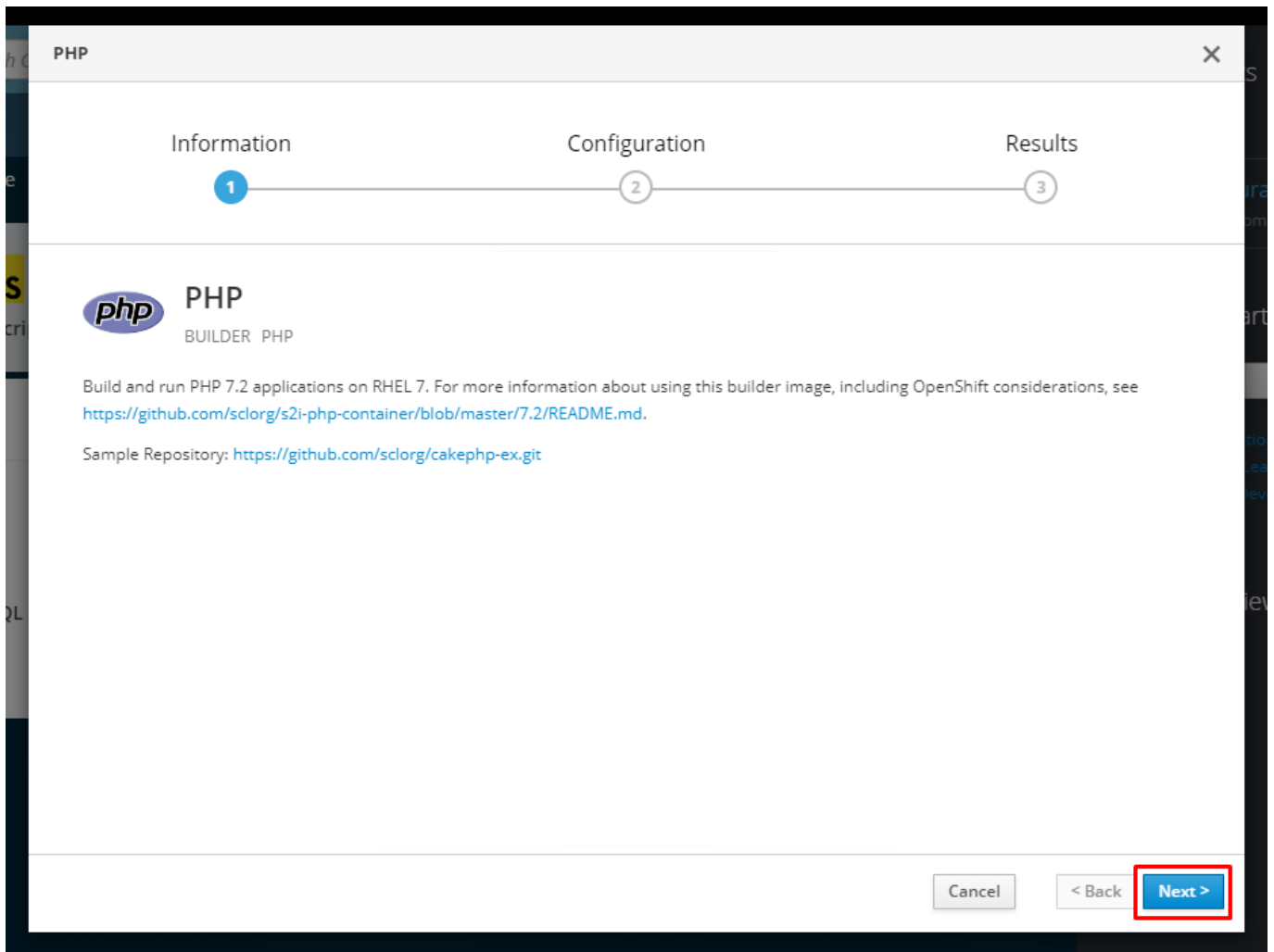
Pricing

Quickly build an effective pricing table for your potential customers with this Bootstrap example. It's built with default Bootstrap components and utilities with little customization.

Free	Pro	Enterprise
\$0 / mo	\$15 / mo	\$29 / mo
10 users included 2 GB of storage Email support Help center access	20 users included 10 GB of storage Priority email support Help center access	30 users included 15 GB of storage Phone and email support Help center access

_3. Vamos a desplegar la web **desde github** utilizando la **imagen de PHP**, ingresamos a la **consola Openshift**





PHP

Information Configuration Results

1 2 3

* Add to Project
Arquitectura IBM

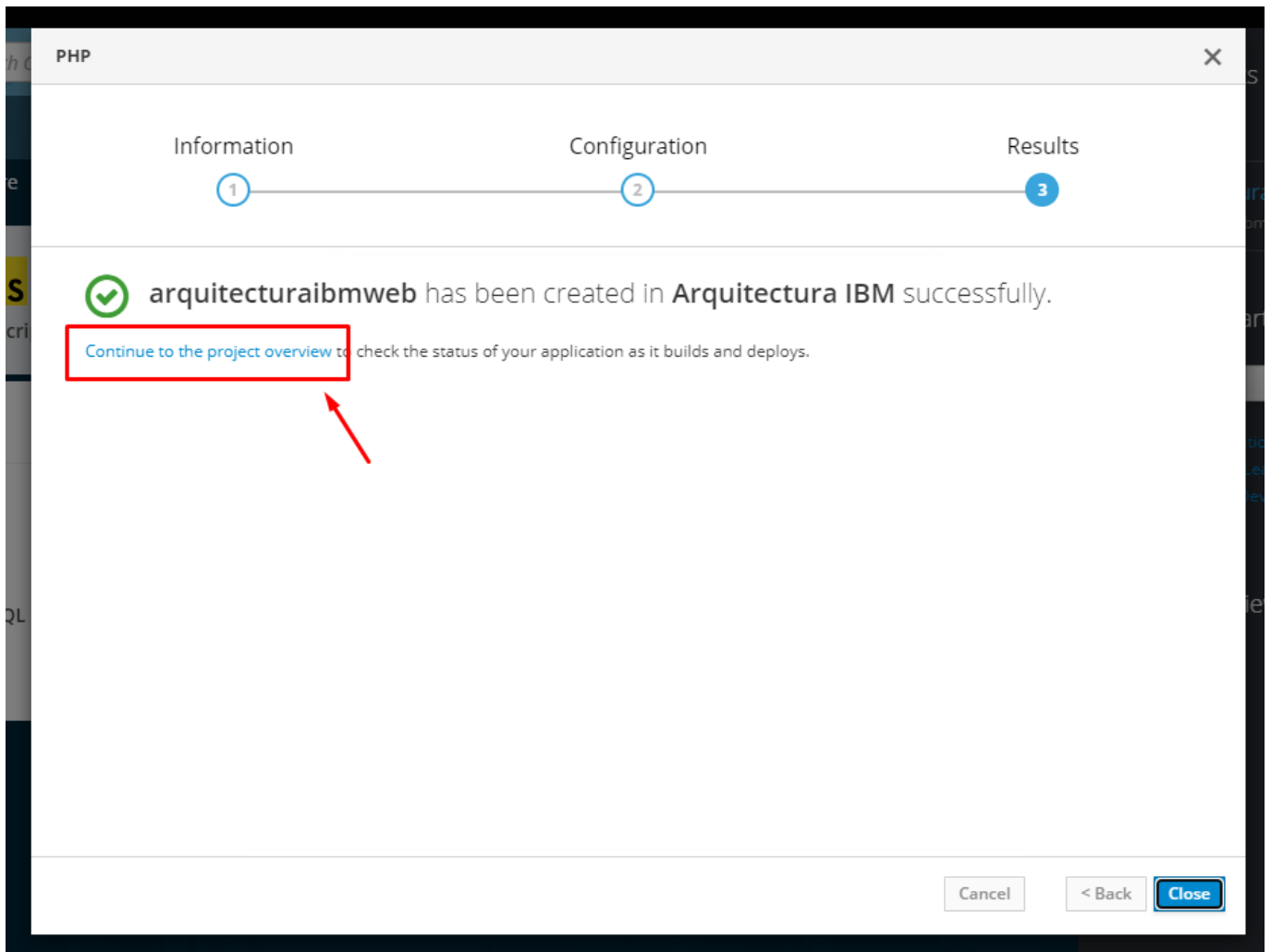
Version
7.2 — latest

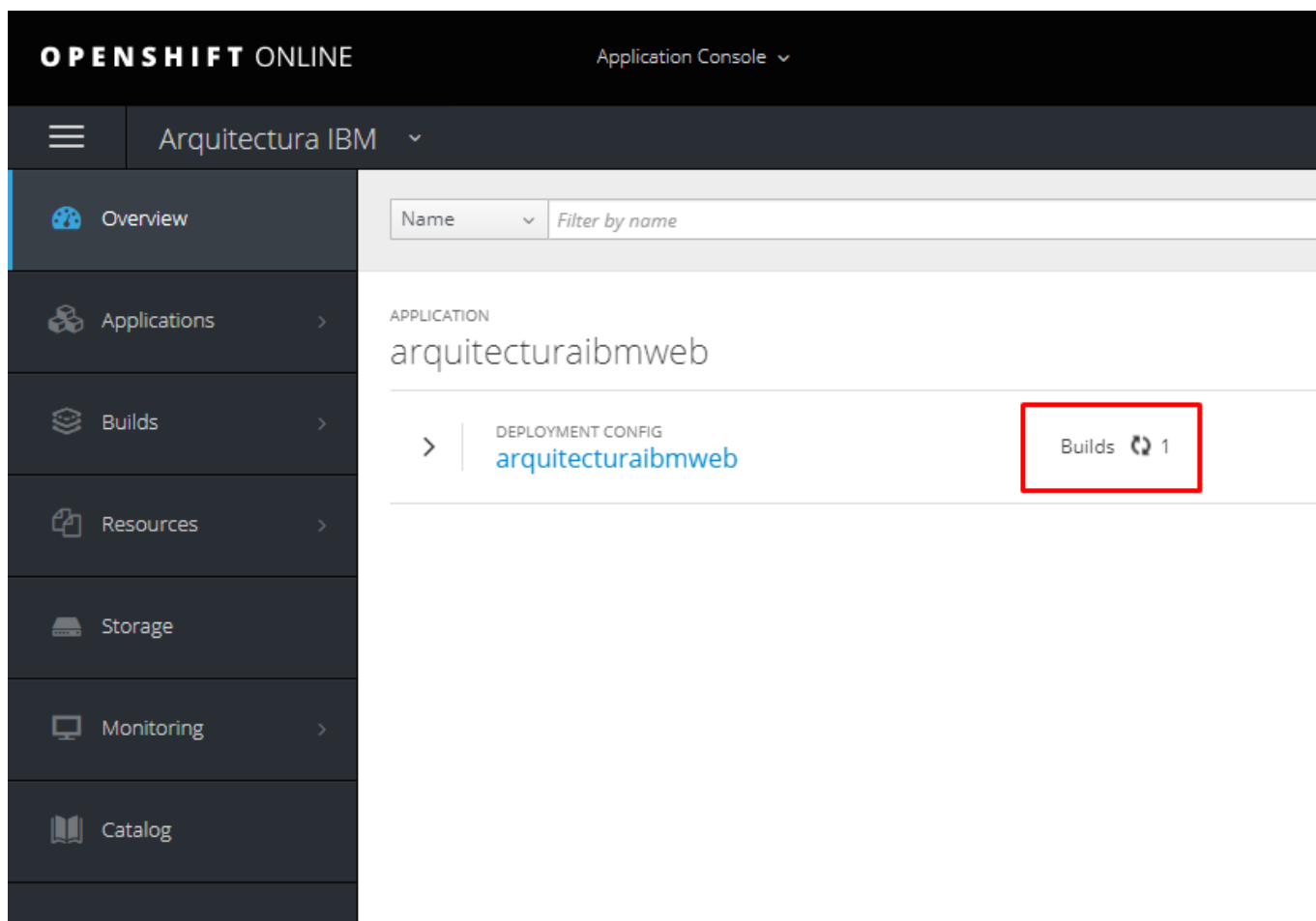
* Application Name
arquitecturaibmweb

* Git Repository
https://github.com/juliopari/bootstrap-web-consulting.git
[Try Sample Repository ↕](#)

If you have a private Git repository or need to change application defaults, view [advanced options](#).

Cancel < Back Create





The screenshot shows the OpenShift Online Application Console interface. The top navigation bar includes 'OPENSIFT ONLINE' and 'Application Console'. The left sidebar contains a menu with options: Overview, Applications, Builds, Resources, Storage, Monitoring, and Catalog. The main content area displays the application 'arquitecturaibmweb' under the 'APPLICATION' section. Below the application name, there is a 'DEPLOYMENT CONFIG' section for 'arquitecturaibmweb'. A red box highlights the 'Builds' section, which shows 'Builds 1'.

_4. Finalmente se crearán varios objetos **openshift** como: **service**, **Pods**, **deployment**, **routes** y se podrá acceder a la web desde la ruta generada que en este caso sería: <http://arquitecturaibmweb-arquitecturaibm.e4ff.pro-eu-west-1.openshiftapps.com/>

Company Consulting Features Enterprise

Pricing

Quickly build an effective pricing table for your potential customers with this Bootstrap example. It's built with default Bootstrap components and utilities with little customization.

Free	Pro	Enterprise
\$0 / mo	\$15 / mo	\$29 / mo
10 users included 2 GB of storage Email support Help center access	20 users included 10 GB of storage Priority email support Help center access	30 users included 15 GB of storage Phone and email support Help center access
Sign up for free	Get started	Contact us

Julio Pari (IT Architect IBM)



Si te ha interesado este artículo y deseas un apoyo o asesoría en algún requerimiento, envíame un mensaje a: (info@juliopari.com) o sino a través de LinkedIn: <https://www.linkedin.com/in/juliopari/>
