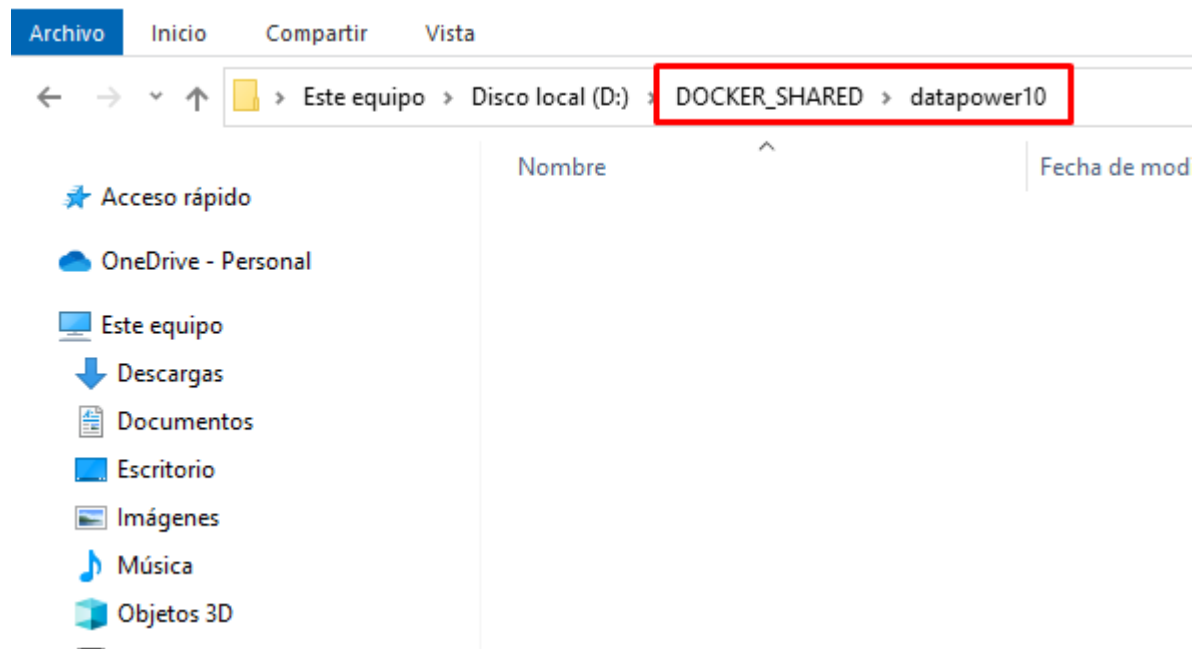
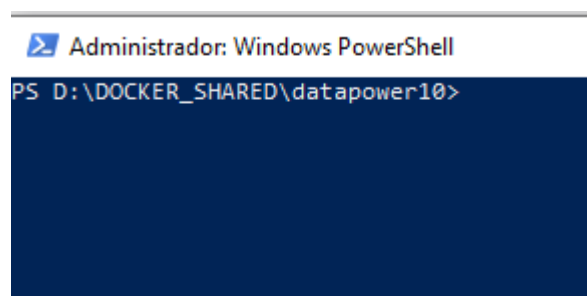


Docker Hub: <https://hub.docker.com/repository/docker/juliopari/datapower/general>

_Paso 1: Ir a una unidad D (unidad que tengas permisos de escritura/lectura)



_Paso 2: Abrir Power Shell como administrador y ubicarse en la carpeta creada previamente, según este ejemplo sería: «D:\DOCKER_SHARED\datapower10»

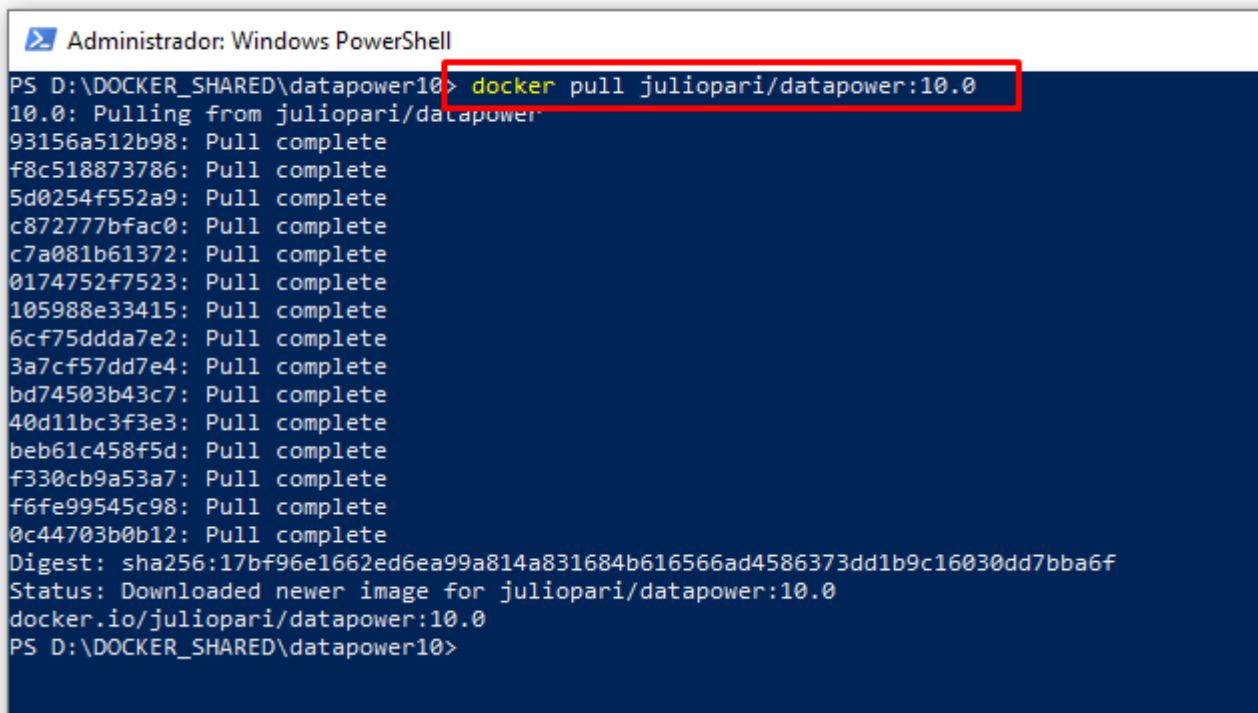


_Paso 3: Descargar la imagen docker datapower

Comando

```
docker pull juliopari/datapower:10.0
```

Evidencia



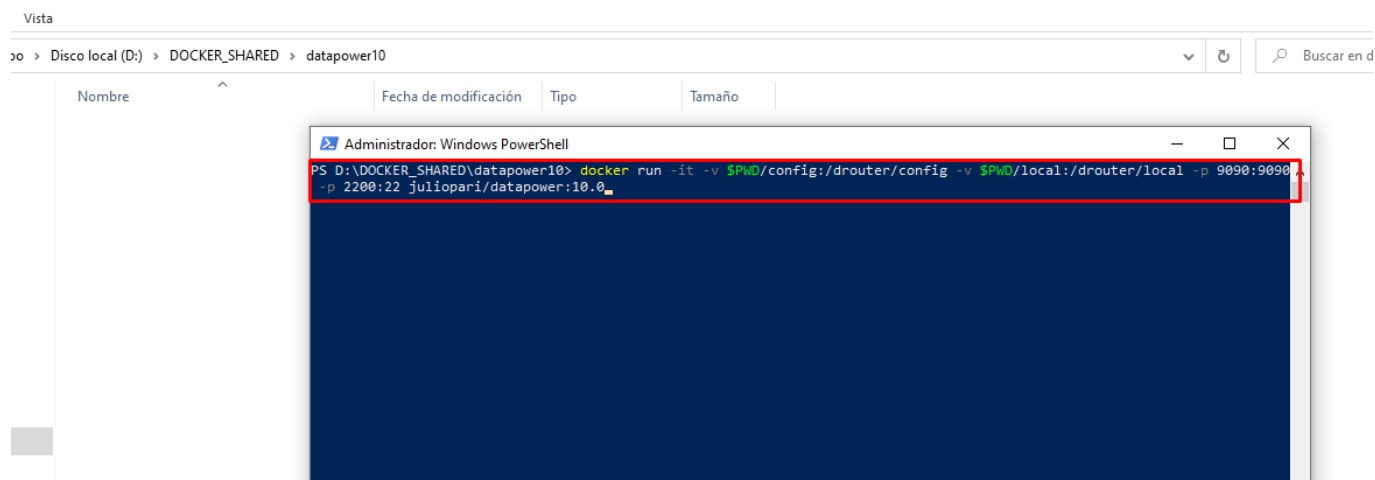
```
Administrador: Windows PowerShell
PS D:\DOCKER_SHARED\datapower10> docker pull juliopari/datapower:10.0
10.0: Pulling from juliopari/datapower:
93156a512b98: Pull complete
f8c518873786: Pull complete
5d0254f552a9: Pull complete
c872777bfac0: Pull complete
c7a081b61372: Pull complete
0174752f7523: Pull complete
105988e33415: Pull complete
6cf75ddda7e2: Pull complete
3a7cf57dd7e4: Pull complete
bd74503b43c7: Pull complete
40d11bc3f3e3: Pull complete
beb61c458f5d: Pull complete
f330cb9a53a7: Pull complete
f6fe99545c98: Pull complete
0c44703b0b12: Pull complete
Digest: sha256:17bf96e1662ed6ea99a814a831684b616566ad4586373dd1b9c16030dd7bba6f
Status: Downloaded newer image for juliopari/datapower:10.0
docker.io/juliopari/datapower:10.0
PS D:\DOCKER_SHARED\datapower10>
```

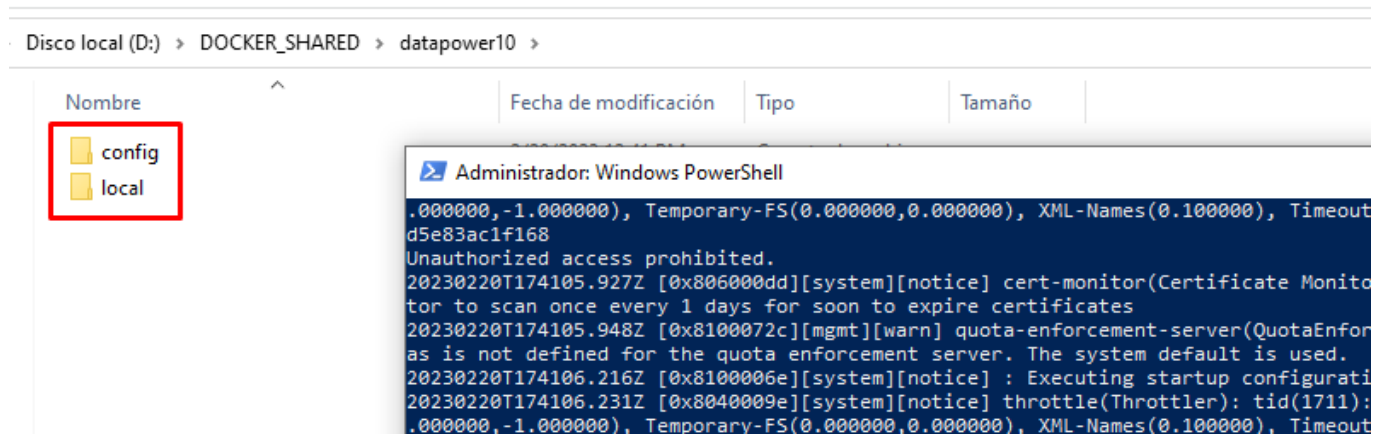
_Paso 4: Ejecutar el contenedor docker con el siguiente comando

Comando

```
docker run -it -v $PWD/config:/drouter/config -v
$PWD/local:/drouter/local -p 9090:9090 -p 2200:22
juliopari/datapower:10.0
```

Evidencia: Observaremos que se ha creado 2 carpetas «**config**» y «**local**»





_Paso 5: Ejecutar los pasos en este orden

```

is down
20230220T174106.451Z [0x00350015][mgmt][notice] apiprobe-settings(default): tid(1135): Operational state down
20230220T174106.452Z [0x00350015][mgmt][notice] api-security-token-manager(default): tid(1103): Operational state down
20230220T174106.454Z [0x00350015][mgmt][notice] smtp-server-connection(default): tid(5580): Operational state down
20230220T174106.454Z [0x00350014][mgmt][notice] smtp-server-connection(default): tid(5580): Operational state up
20230220T174106.474Z [0x8100072c][mgmt][warn] quota-enforcement-server(QuotaEnforcementServer): tid(831): A password ali
as is not defined for the quota enforcement server. The system default is used.
20230220T174106.484Z [0x00350014][mgmt][notice] api-rule(default-preflow-rule): tid(111): Operational state up
20230220T174106.484Z [0x00350014][mgmt][notice] web-mgmt(WebGUI-Settings): tid(303): Operational state up
20230220T174106.529Z [0x00350014][mgmt][notice] quota-enforcement-server(QuotaEnforcementServer): tid(831): Operational
state up
login:

```

_5.1: Iniciar sesión

```

/*
login: admin
password: admin
*/

```

_5.2: Ingresar estos comandos

```

/*
co
web-mgmt
show
admin-state enabled
exit
write mem
y
*/

```

Evidencia

```
state up
login: admin
Password: *****

Welcome to IBM DataPower Gateway console configuration.
Copyright IBM Corporation 1999, 2021

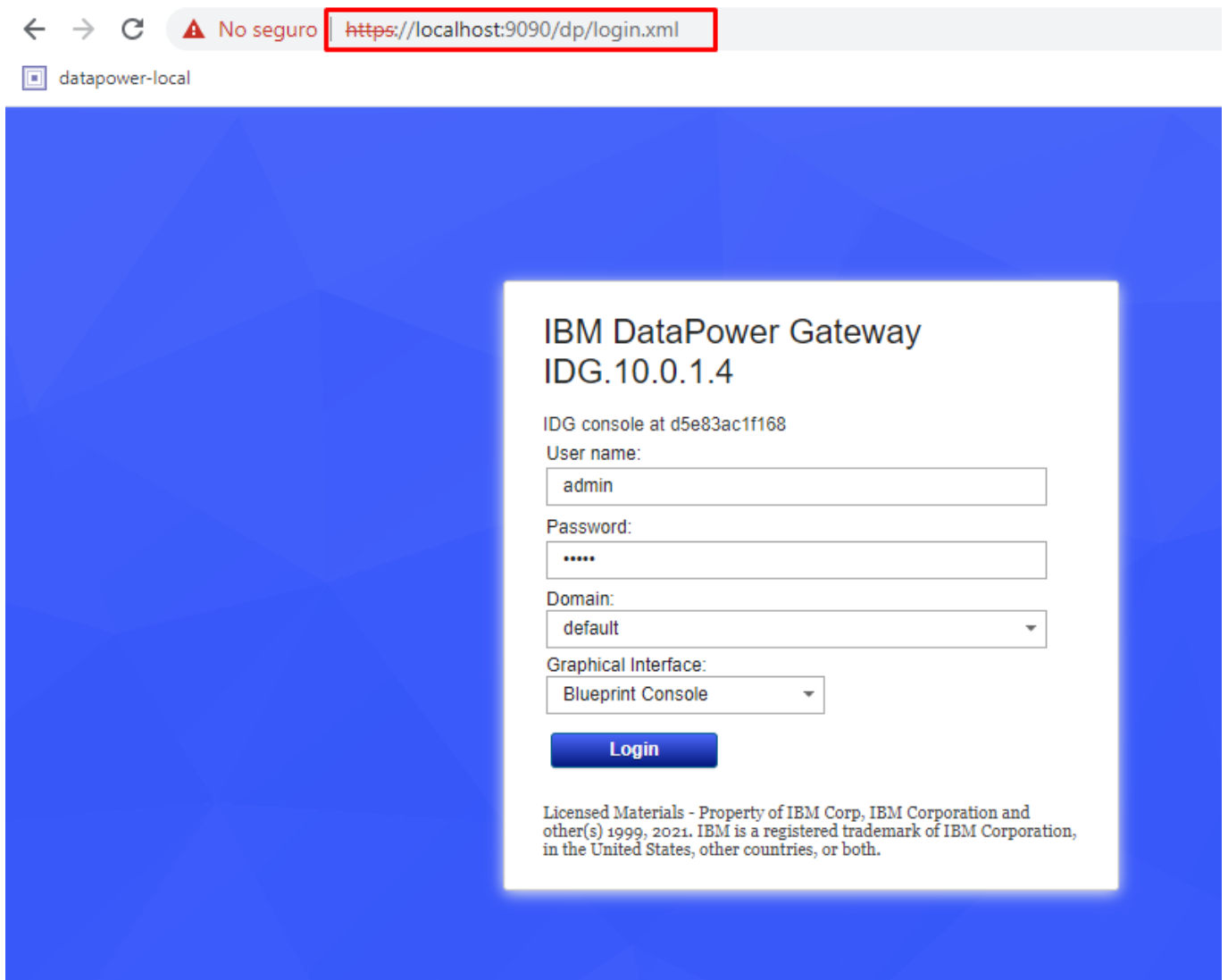
Version: IDG.10.0.1.4 build 334153 on Jul 15, 2021 3:38:08 PM
Delivery type: LTS
Serial number: 0000001

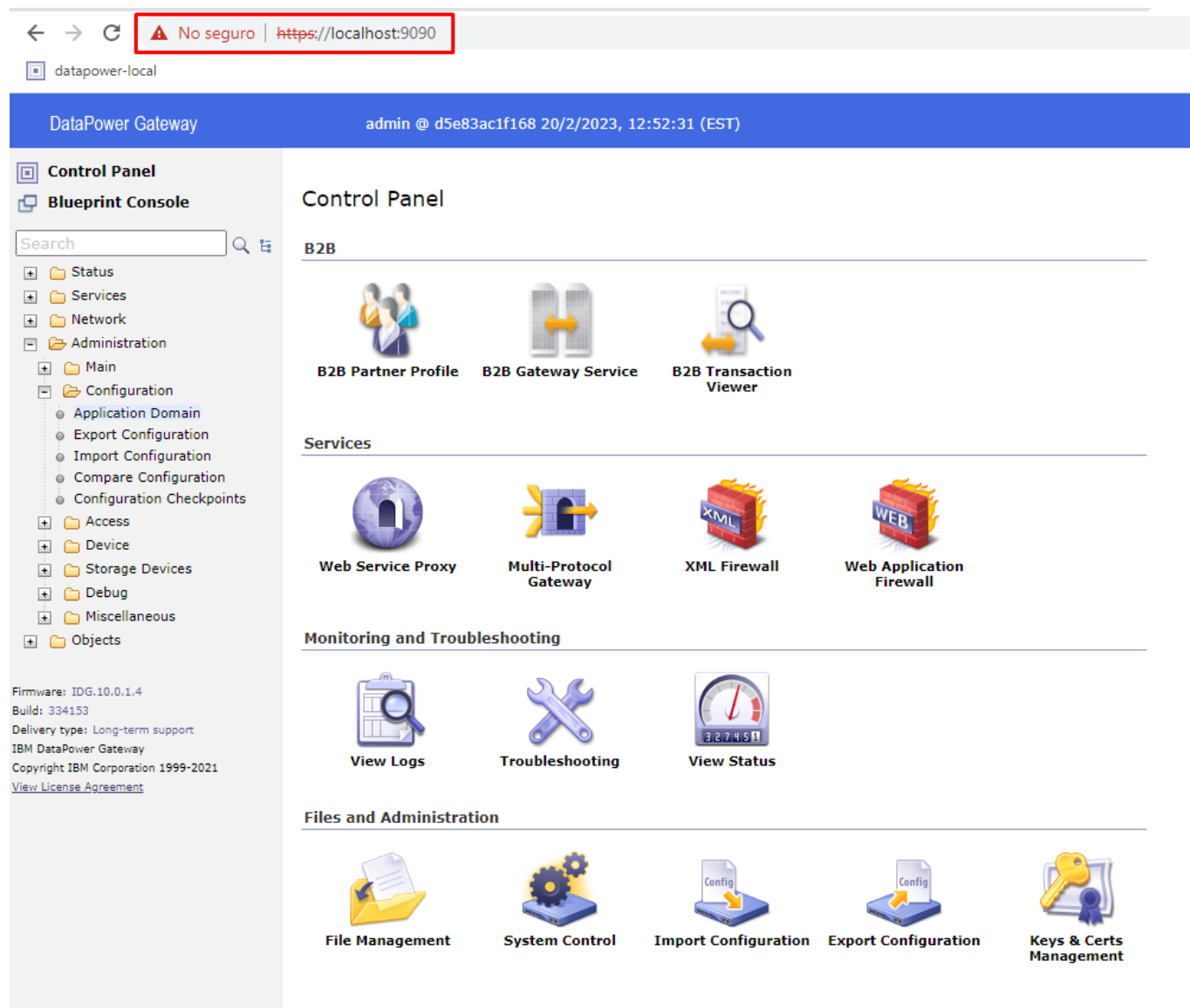
idg# co
Global mode
idg(config)# web-mgmt
Modify Web Management Service configuration

idg(config web-mgmt)# show
admin-state enabled
ip-address 0.0.0.0
port 9090
save-config-overwrite on
idle-timeout 600 Seconds
acl web-mgmt [up]
ssl-config-type server
enable-ssl on

idg(config web-mgmt)# admin-state enabled
idg(config web-mgmt)# exit
idg(config)# write mem
Overwrite previously saved configuration? Yes/No [y/n]: y
Configuration saved successfully.
idg(config)# 20230220T174921.888Z [0x8100000c][mgmt][notice] : tid(7180): Saved curr
-startup.cfg'
20230220T174921.888Z [0x81000040][mgmt][notice] domain(default): tid(7180): Domain d
20230220T174921.899Z [0x8100000c][mgmt][notice] : tid(111): Saved current configurat
```

Paso 6: Abrir el explorador <https://localhost:9090>





Fuente IBM

- <https://www.ibm.com/docs/en/datapower-gateway/7.5.0?topic=docker-running-datapower-gateway-in-containers>
- <https://www.ibm.com/docs/en/datapower-gateway/10.0.1?topic=virtual-datapower-gateway-docker>

Julio Pari (IT Architect IBM)



Si te ha interesado este artículo y deseas un apoyo o asesoría en algún requerimiento, envíame un mensaje a: (info@juliopari.com) o sino a través de LinkedIn:
<https://www.linkedin.com/in/juliopari/>
