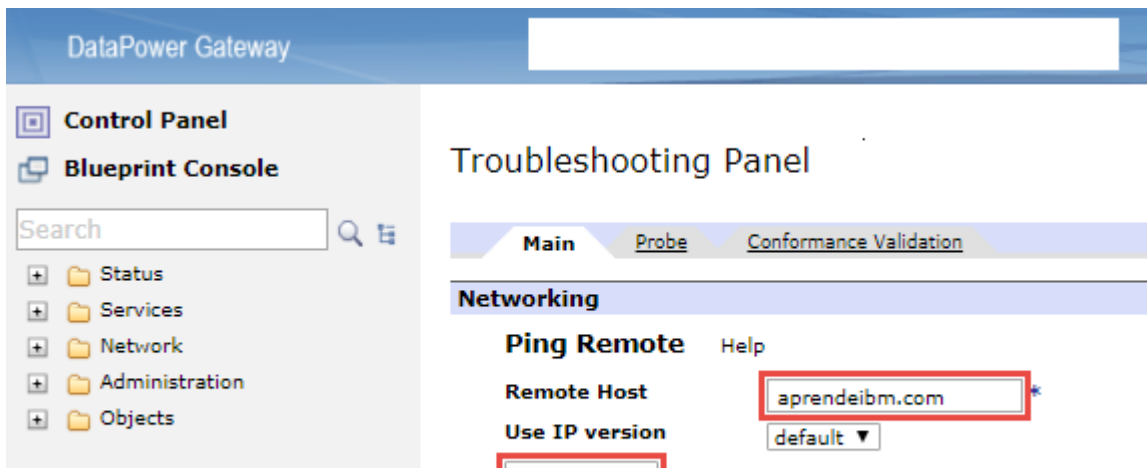
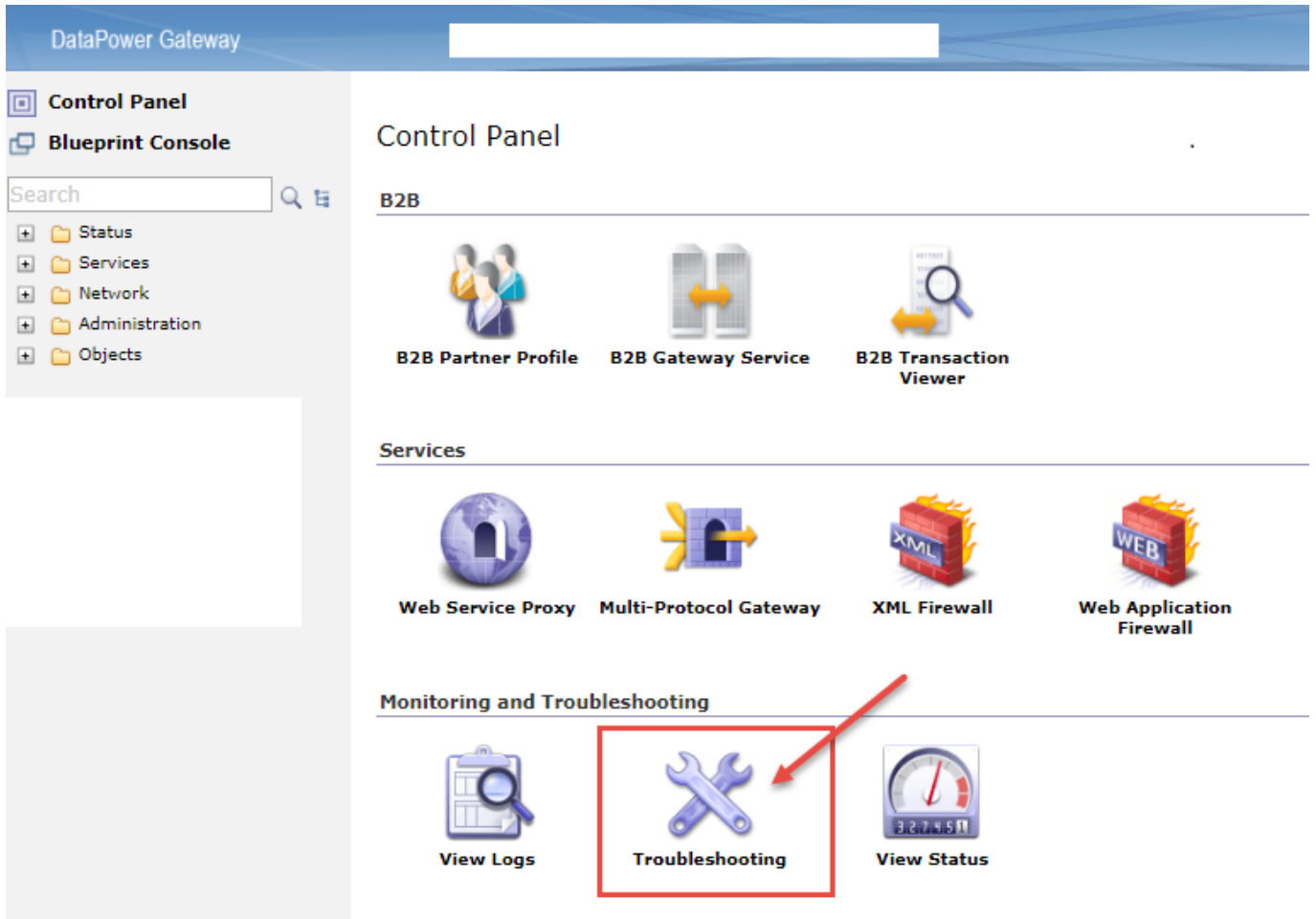
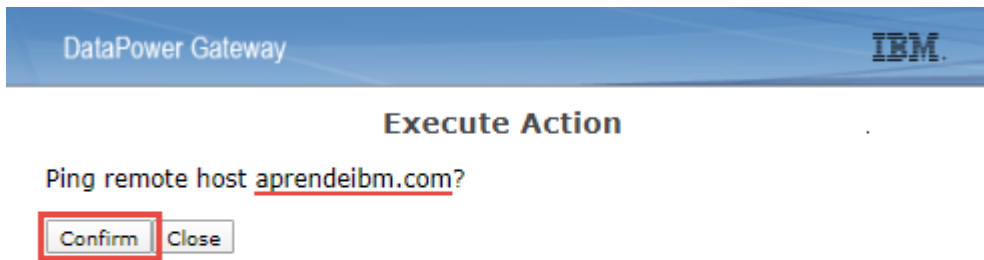


DataPower - Troubleshooting - ping





DataPower - Troubleshooting - [telnet](#)

DataPower Gateway

Control Panel

Blueprint Console

Search

- Status
- Services
- Network
- Administration
- Objects

B2B

- B2B Partner Profile
- B2B Gateway Service
- B2B Transaction Viewer

Services

- Web Service Proxy
- Multi-Protocol Gateway
- XML Firewall
- Web Application Firewall

Monitoring and Troubleshooting

- View Logs
- Troubleshooting**
- View Status

DataPower Gateway

Control Panel

Blueprint Console

Search

- Status
- Services
- Network
- Administration
- Objects

Troubleshooting Panel

Main Probe Conformance Validation

Networking

Ping Remote Help

Remote Host *

Use IP version default ▾

Ping Remote

TCP Connection Test Help

Remote Host * **aprendeibm.com**

Remote Port * 80

Timeout

Use IP version default ▾

TCP Connection Test

The image shows two screenshots of the IBM DataPower Gateway 7.5 Troubleshooting Panel. The top screenshot displays a confirmation dialog titled "Execute Action" with the text "Test TCP connectivity to aprendeibm.com port 80?" and two buttons: "Confirm" (highlighted with a red box) and "Close". The bottom screenshot shows an error message titled "Execute Action" with the text "Error while processing action." and a bullet point: "• TCP connection to "aprendeibm.com port 80" failed (connection refused)". A "Close" button is visible below the error message.

Julio Pari (IT Architect IBM)



Si te ha interesado este artículo y deseas un apoyo o asesoría en algún requerimiento, envíame un mensaje a: (info@juliopari.com) o sino a través de LinkedIn:
<https://www.linkedin.com/in/juliopari/>
