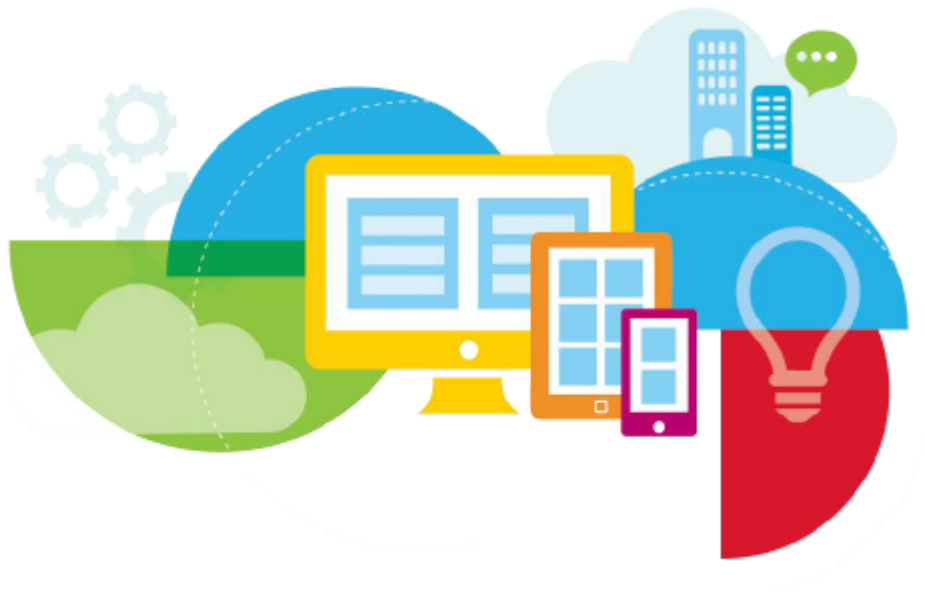


# IBM WebSphere Portal 8.5

## *Performance Tuning Guide*



**How to Set**

In the WebSphere Integrated Solutions Console

Resources → Resource Environment → Resource Environment Providers → WP

NavigatorService → Custom properties

Table 9 Navigator Service Settings

Parameter	NavigatorService.properties		Definition
	Default Value	Value Used	
<b>public.expires</b> (seconds)	60	3600	Determines cache expiration time for unauthenticated pages in browser caches and proxy caches. If the setting <code>remote.cache.expiration</code> is also set to a value greater than or equal to 0, the smaller one of the two values is used.
<b>public.reload</b> (seconds)	60	3600	WebSphere Portal maintains an internal cache of the list of pages visible to unauthenticated users, and the arrangement of portlets on those pages. This controls how frequently that internal cache is refreshed. Note, however, that this is not caching the content of those pages – simply their layout.
<b>remote.cache.expiration</b> (seconds)	10800	28800	Determines cache expiration for caches outside of the Portal server for authenticated as well as for unauthenticated pages

## Julio Pari (IT Architect IBM)



Si te ha interesado este artículo y deseas un apoyo o asesoría en algún requerimiento, envíame un mensaje a: (info@juliopari.com) o sino a través de LinkedIn:

<https://www.linkedin.com/in/juliopari/>