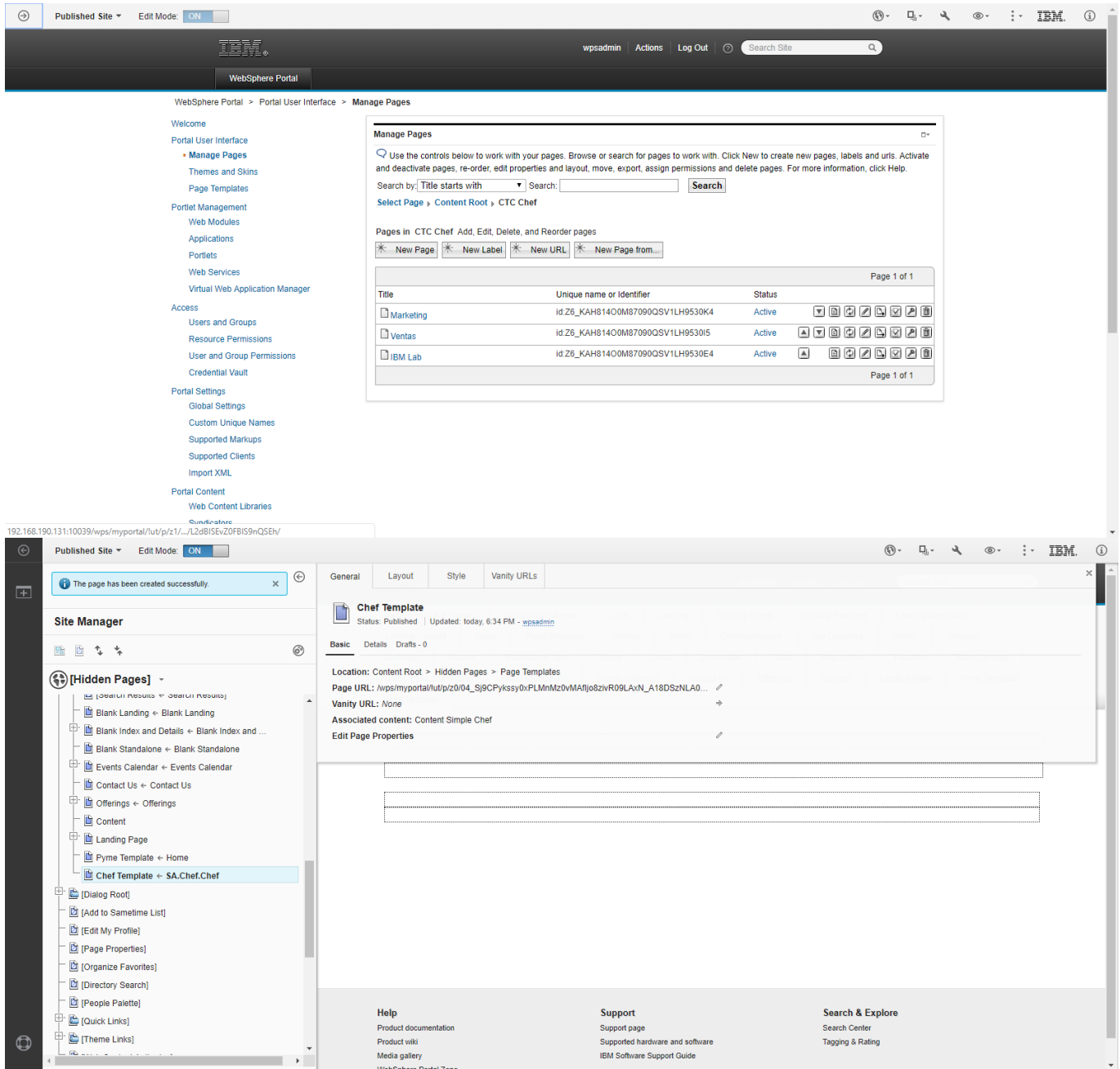
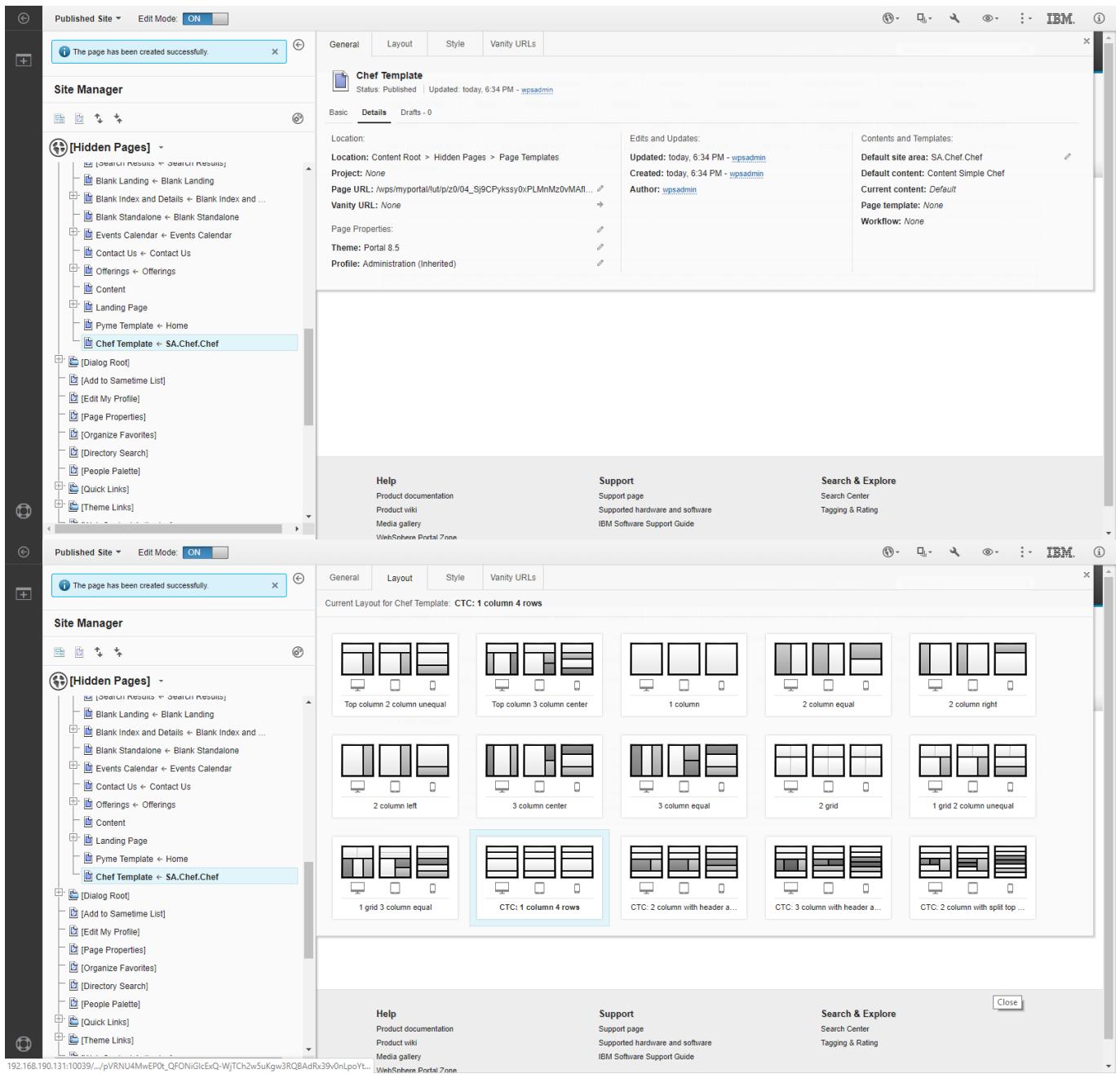
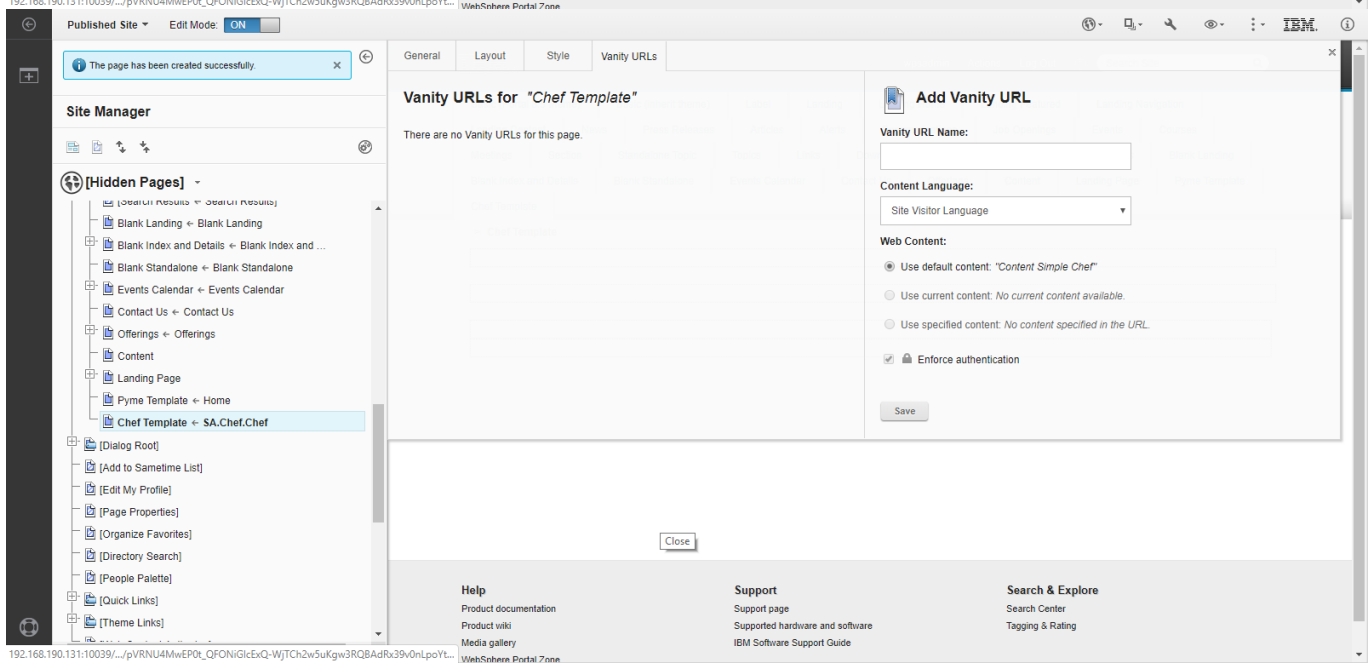
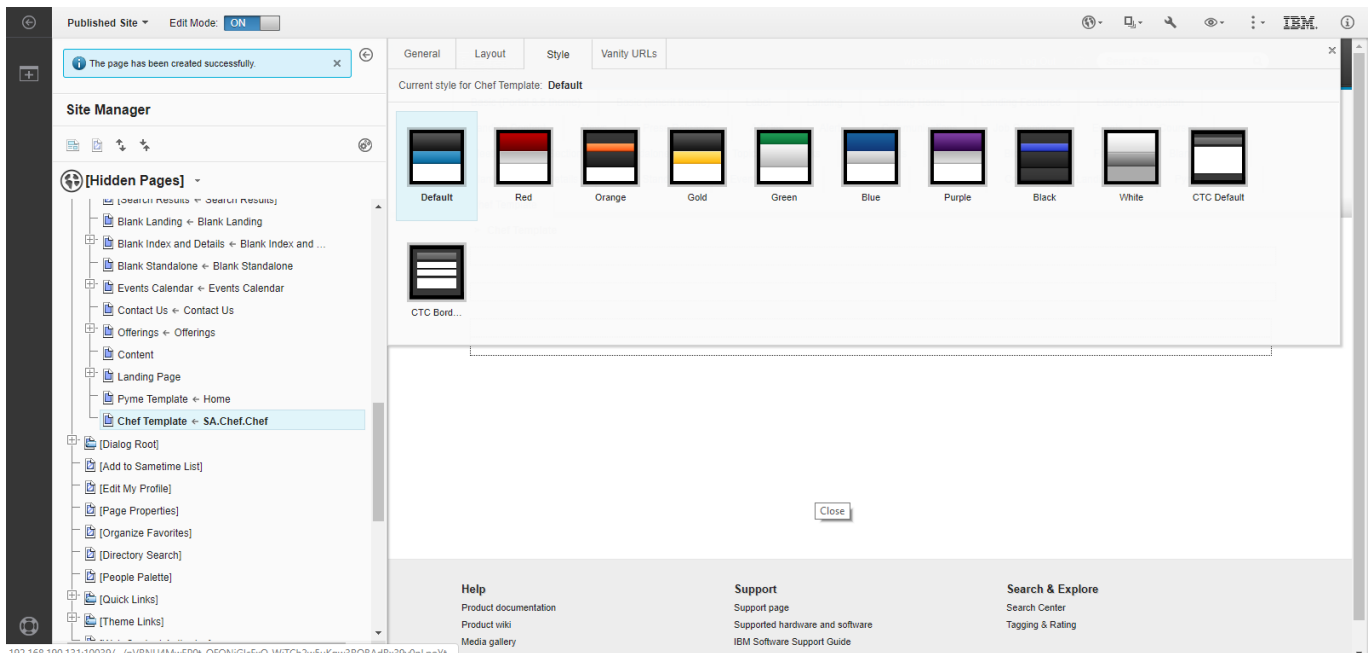
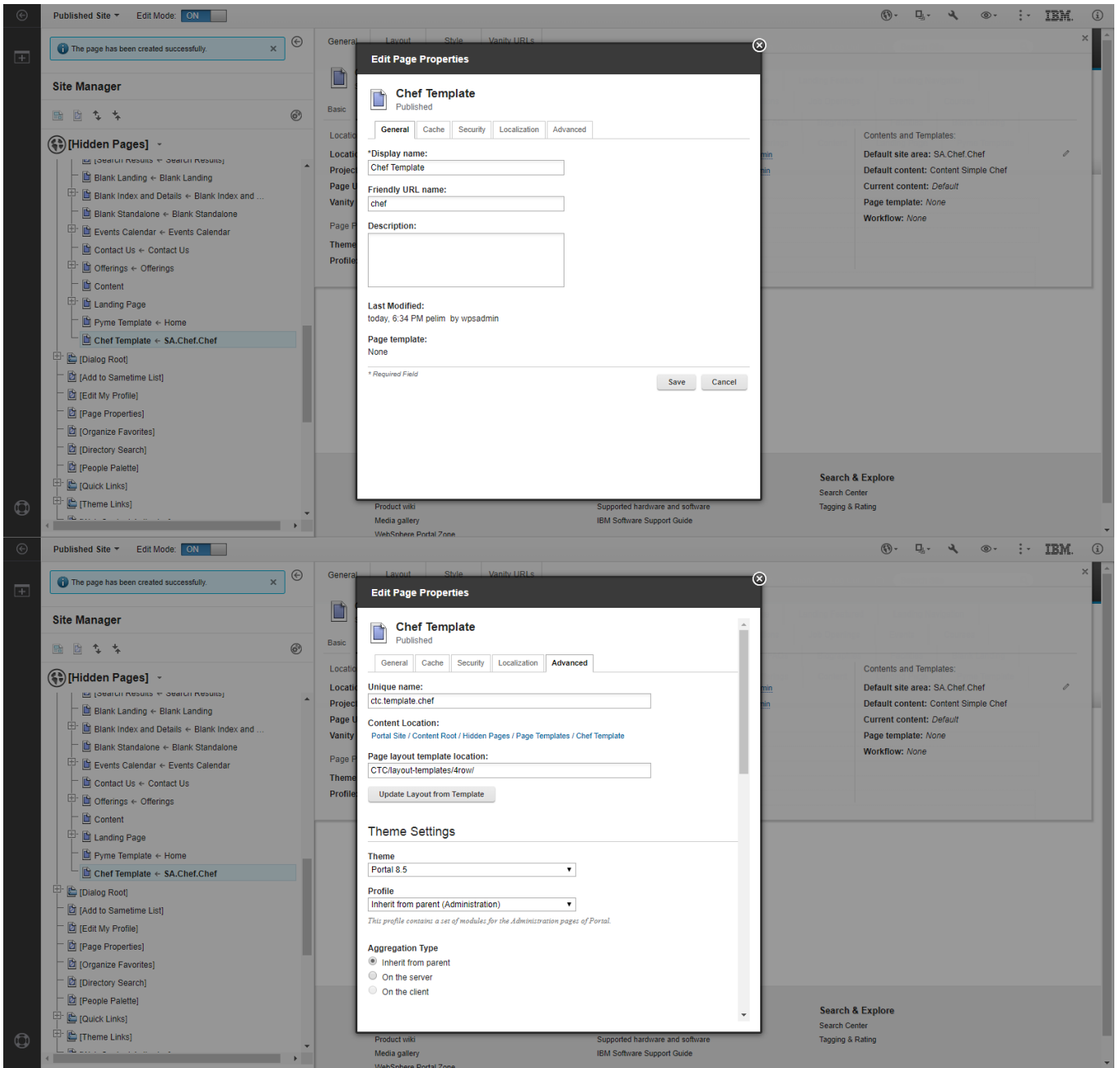


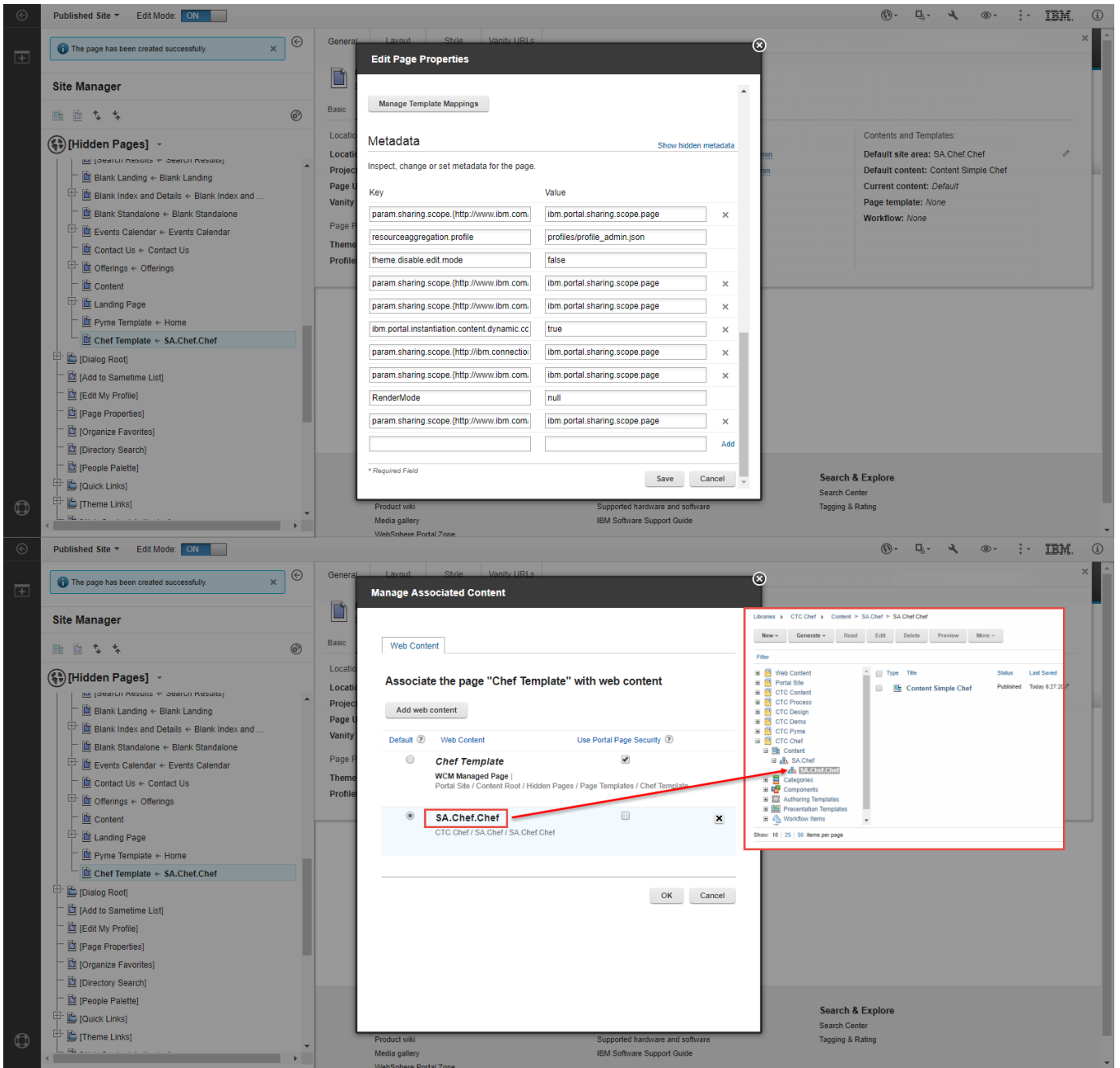
Linkedin: <https://www.linkedin.com/pulse/implementación-de-ctc-44-con-ibm-websphere-portal-859-julio-pari/>

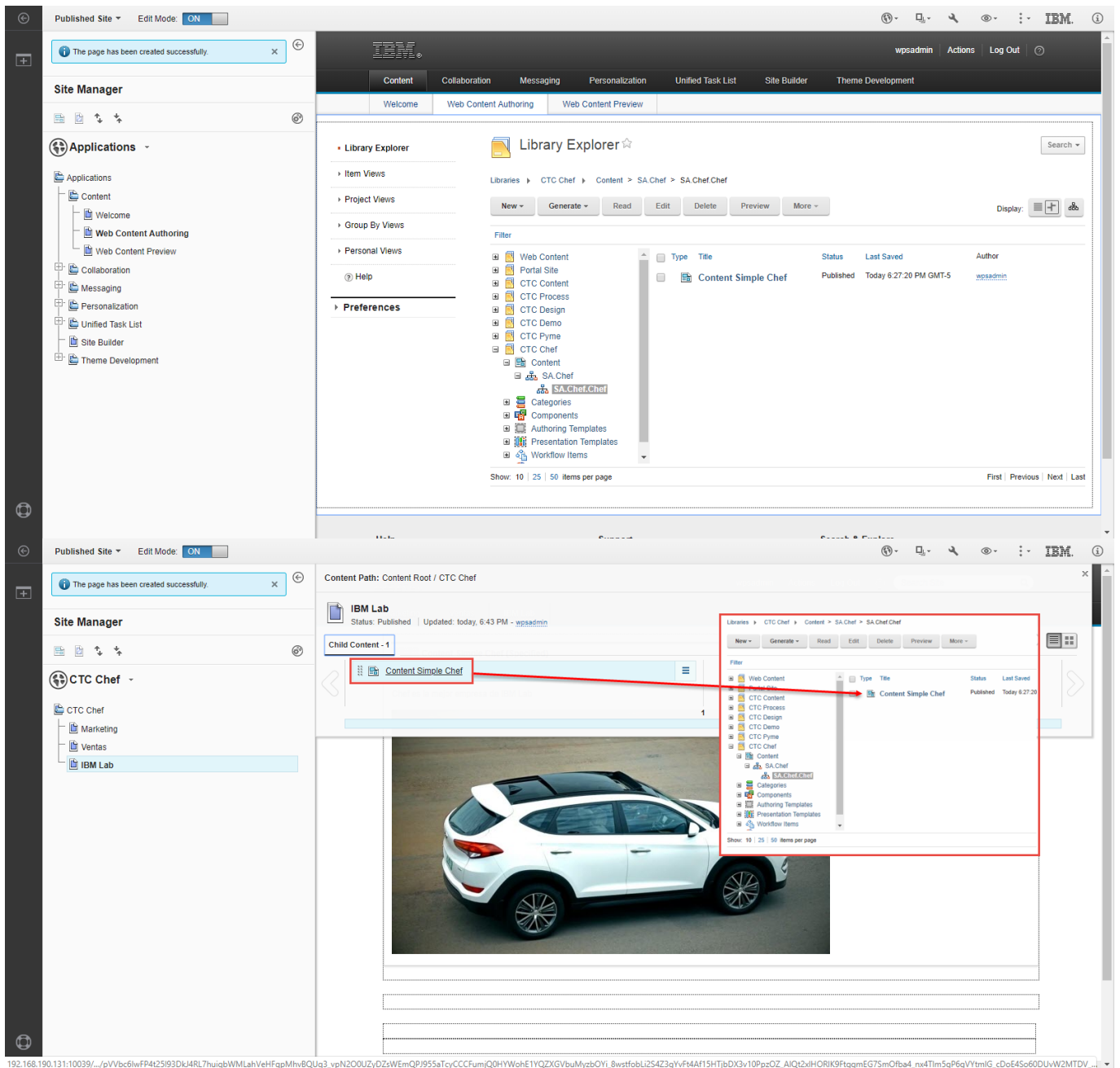




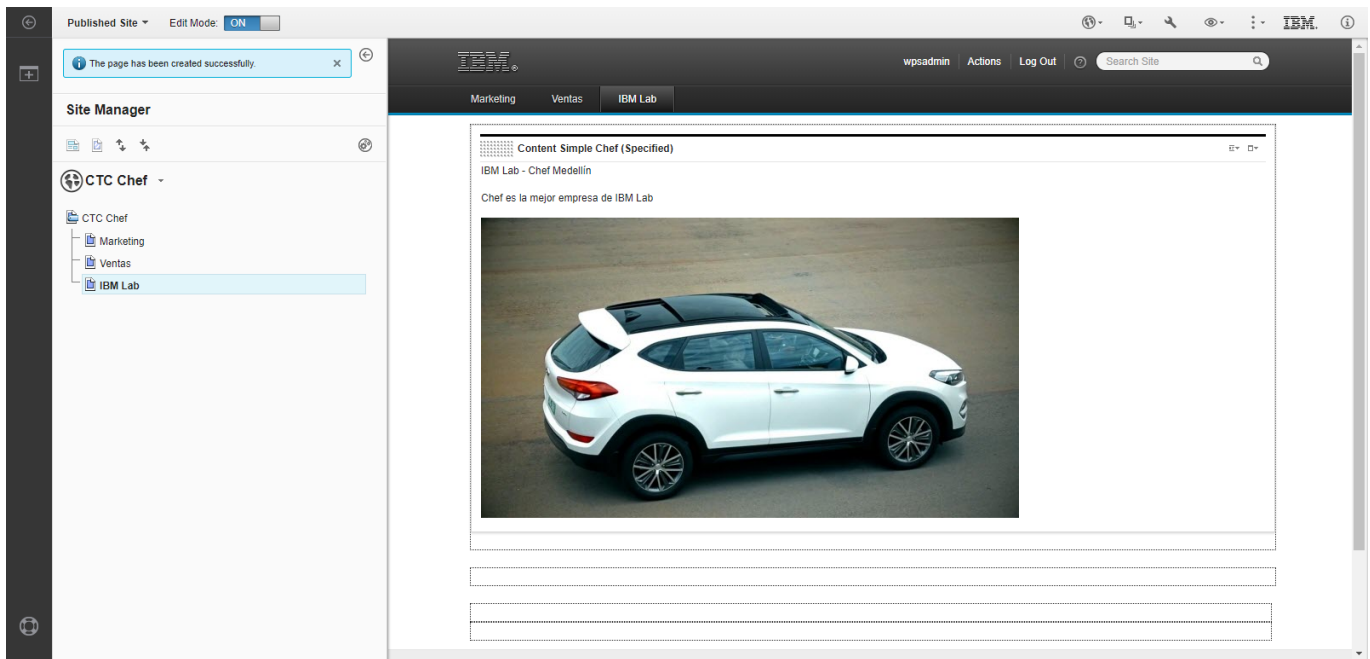








192.168.190.131:10039/.../vPvbc6iWF4t25i93Dk4RL7huiqbWMLahVehFqMhV8QUq3_vPn200UzYDzSWEmQPj955aTcyCCCFumjOQHWHohE1YQZGXGvbuMyzbQYi_8wstfobl2S4Z3gYvF4Af15HTjDxGv10PpcOZ_AlQ2xIHORIK9FtggmEG75mOfba4_nx4Tlm5gP6gVYVmlG_cDoE45o60DUwW2MTDv...



Apuntes:

=====

Page layout template location

dav:fs-type1/themes/Portal8.5/CTC/layout-templates/4rowsplitmain/

=====

param.sharing.scope
ibm.portal.sharing.scope.page

resourceaggregation.profile
profiles/profile_admin.json

theme.disable.edit.mode
false

param.sharing.scope. {http://www.ibm.com/xmlns/prod/datatype/content/resource-collections}
ibm.portal.sharing.scope.page

param.sharing.scope. {http://www.ibm.com/xmlns/prod/websphere/portal/publicparams} pat

h-info

ibm.portal.sharing.scope.page

ibm.portal.instantiation.content.dynamic.copy.target.selection

true

RenderMode

null

param.sharing.scope.{http://www.ibm.com/xmlns/prod/datatype/content}

ibm.portal.sharing.scope.page

=====
=====

Julio Pari (IT Architect IBM)



Si te ha interesado este artículo y deseas un apoyo o asesoría en algún requerimiento, envíame un mensaje a: (info@juliopari.com) o sino a través de LinkedIn: <https://www.linkedin.com/in/juliopari/>
