



IBM Business Process Manager

System Administrator skills for IBM Business Process Manager Advanced V8.5.7

Role

The system administrator performs the installation, configuration and day-to-day tasks associated with ensuring the smooth and efficient operation of a BPM runtime environment. This includes product installation, configuration and deployment of business applications, connecting to back-end resources and basic troubleshooting.

The system administrator is generally self-sufficient and able to perform most of the tasks involved in the role with limited assistance from peers, product documentation, and vendor support services.

Assumptions

It is assumed that the individual following this training path has basic skills in the following areas:

- The Linux operating system
- Java Platform, Enterprise Edition (Java EE) and Extensible Markup Language (XML)
- Administering multitier business applications
- Managing WebSphere Application Server

Objectives

After completing the WB871 training students should be able to:

- Configure and administer a Process Center environment
- Describe the purpose and business value of the tools included in IBM Business Process Manager Advanced V8.5.7: IBM Process Designer, IBM Integration Designer, IBM Process Server, IBM Process Center, and WebSphere Enterprise Service Bus
- Describe IBM Business Process Manager Advanced architecture, concepts, and terminology
- Describe the deployment considerations for IBM Business Process Manager Advanced components
- Describe the Process Server high availability topologies and their selection criteria
- Create a Process Center clustered environment by using the Deployment Environment wizard
- Create a customized properties file by using the IBM BPM Configuration editor
- Create a Process Server clustered environment by using the BPMConfig utility
- Purge content in the Process Center environment
- Verify the functions of failover in a clustered environment
- Deploy and manage business applications
- Work with the administrative console and management tools
- Deploy applications to an offline and online Process Server environment
- Migrate process instances
- Implement SSL between the Process Center and Process Server environment
- Troubleshoot the environment

After completing the WB868 training students should be able to:

- Apply the Business Process Manager performance checklist and configure the server for better performance
- Identify key development best practices for IBM Process Designer and IBM Integration Designer
- Implement best practices for general WebSphere runtime performance
- Tune the target modules for various bindings
- Create efficient Coaches and Coach Views
- Identify key WebSphere monitoring facilities
- Evaluate various bottleneck patterns and determine a possible solution that is based on your observations
- Collect verbose GC trace logs from the runtime and analyze them to diagnose potential Java memory management issues
- Monitor application server performance by using WebSphere and the IBM Support Assistant
- Monitor and tune the JVM for optimum throughput and response time
- Monitor and tune connection pools for optimum performance
- Use the IBM Health Center tool to profile and tune Java EE applications
- Troubleshoot Business Process Manager performance problems

CONTINUED

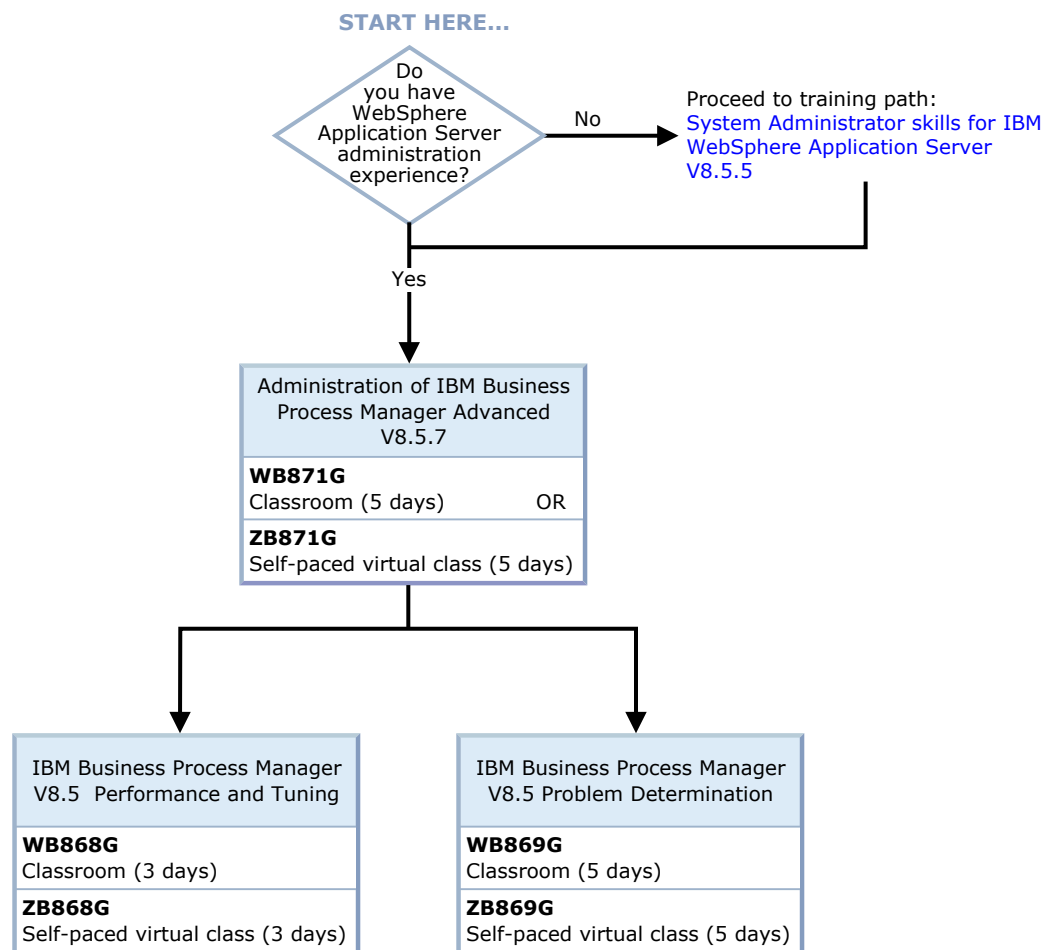
On the next page...

CONTINUED
from the previous page...

Objectives

After completing the WB869 training students should be able to:

- Describe key problem determination steps
- Describe error prevention strategies
- Identify and collect MustGather data for IBM Business Process Manager
- Query failed events through Failed Event Manager and resubmit the events after the problem is resolved
- Describe the exception types from the SCA programming model: service business exceptions and service runtime exceptions
- Examine the trace log to follow the navigation steps inside the business process engine
- Isolate and troubleshoot WebSphere Adapter-related runtime problems
- Explain how to troubleshoot Advanced Integration services (AIS)
- Use Business Process Choreographer Explorer to examine problems with running business process instances



Certification test
See certification Web site for test preparation

Test C9550-402
IBM Certified BPM System Administration – Business Process Manager Advanced V8.5

