

**IBM Boston Technical Exploration Center  
404 Wyman Street, Boston MA**

# WebSphere Lab Jam



# Overview

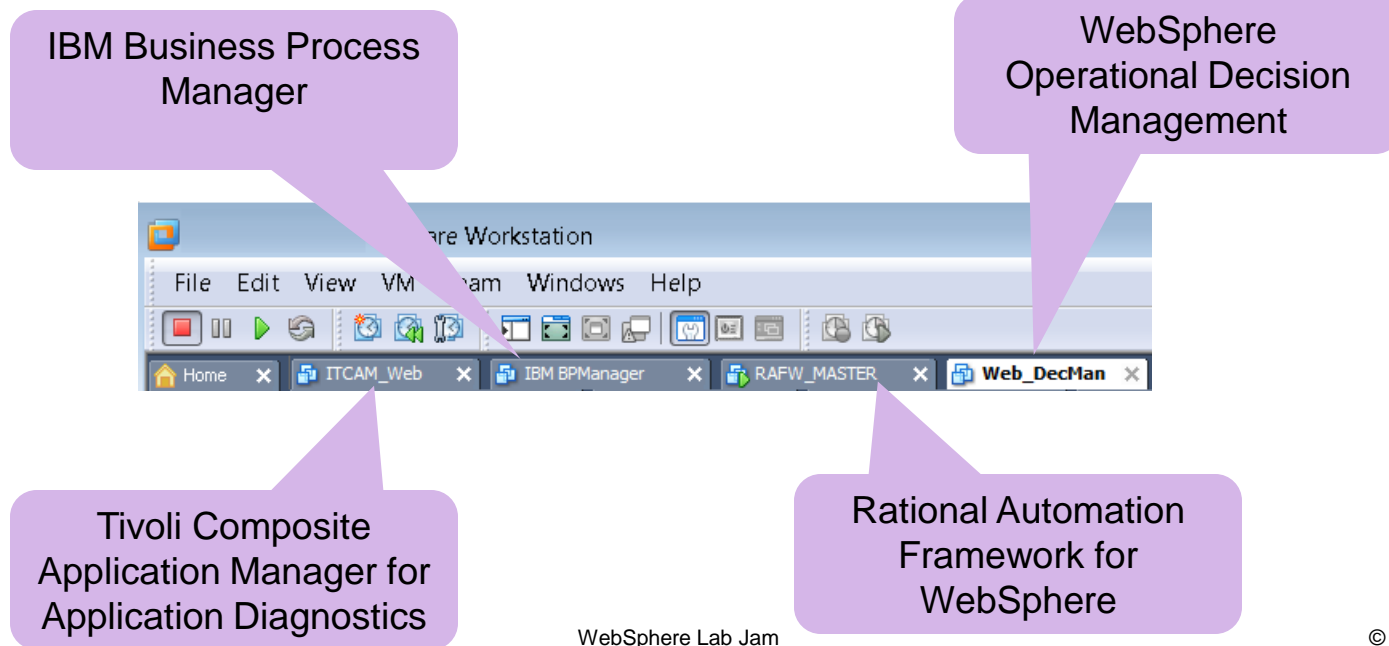
- Introduction
- VMWare – Setup
- IBM Business Process Manager
- WebSphere Operational Decision Management  
Rules & Events
- Rational Automation Framework for WebSphere
- Tivoli Composite Application Manager for Application Diagnostics
- Getting Started - Labs

## Introduction

- This will be a brief introduction to what you'll see in the labs
- Lab Books are limited Morning Sessions please return the Lab Books
- Please fill out the Technology Ballot
- Wiki is at [IBMBPMatWork.com](http://IBMBPMatWork.com)

## Getting Started - Labs

- Lab Choices:
  - IBM Business Process Manager
  - WebSphere Operational Decision Management (Rules & Events)
  - Rational Automation Framework for WebSphere
  - IBM Tivoli Composite Application Manager for Application Diagnostics
- Select the vmware tab to choose your lab



## Start the vmware image

- Look in the “Description section” for Log on and password information
- Select the “Power on this virtual machine”
- If Asked – Click “I Moved It”

IBM BPM 7.5 PoT (v1.4) × WBE7011\_POT\_2011\_03\_16 × WebSphere ILOG JRules 7.1.1.0 ... ×

IBM BPM 7.5 PoT (v1.4)

- ▶ Power on this virtual machine
- Edit virtual machine settings
- Upgrade this virtual machine

▼ Devices

Memory	4 GB
Processors	2
Hard Disk (SCSI)	70 GB
CD/DVD (IDE)	Auto detect
Floppy	Auto detect
Network Adapter	NAT
USB Controller	Present
Sound Card	Auto detect
Display	Auto detect

▼ Description

Owner: Paul Pacholski - pacholsk@ca.ibm.com

Windows Accounts:  
 =====  
 Administrator / passw0rd  
 bpmadmin / bpmadmin1

Administrators  
 =====  
 BPM 7.5 - admin/admin  
 ILOG 7.1.1 - resAdmin/resAdmin

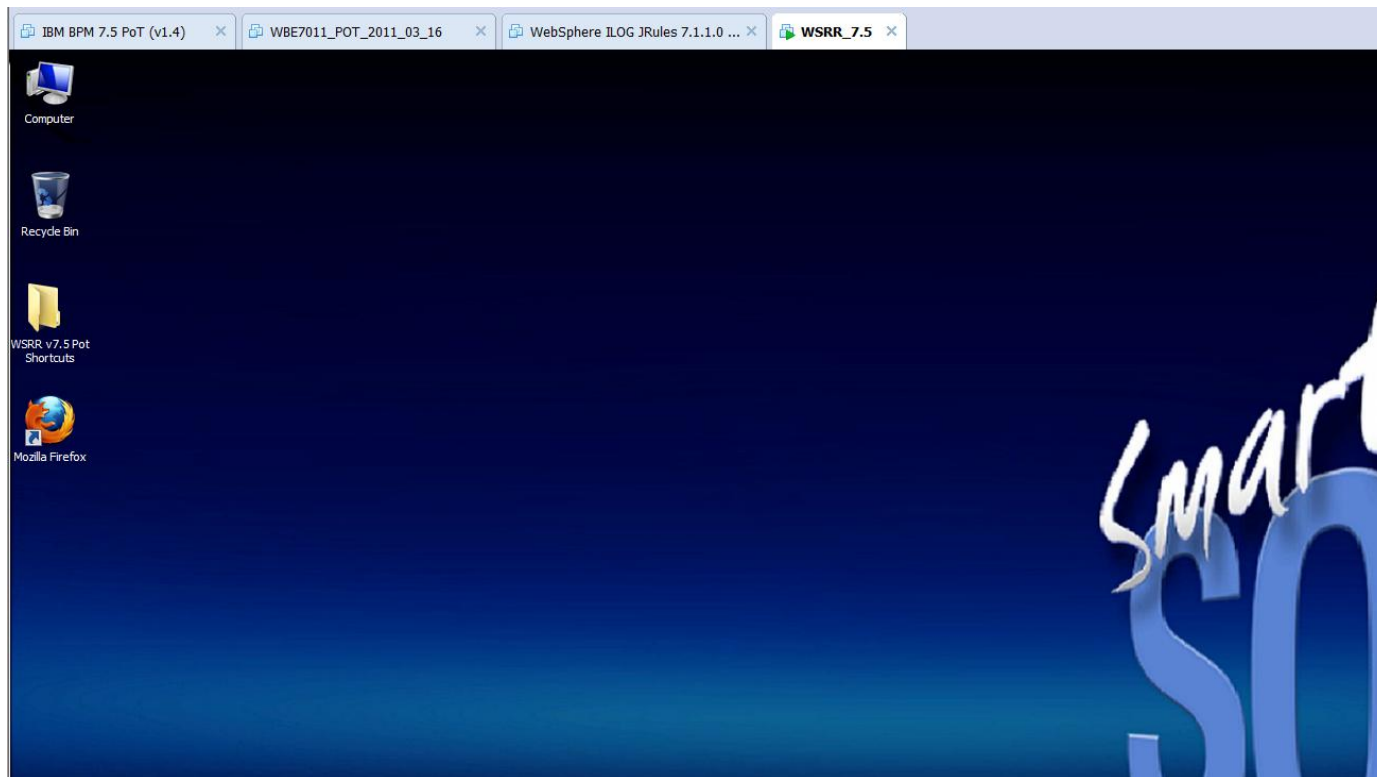
V1.4  
 ===

▼ Virtual Machine Details

**State:** Powered off  
**Configuration file:** I:\User\A\_WebSphereLabJam\VMware\BPM\BPM75 v1.4\BPM-75-POT-V1.4\Windows Server 2008 R2 x64 -  
**Hardware compatibility:** Workstation 6.5-7.x virtual machine

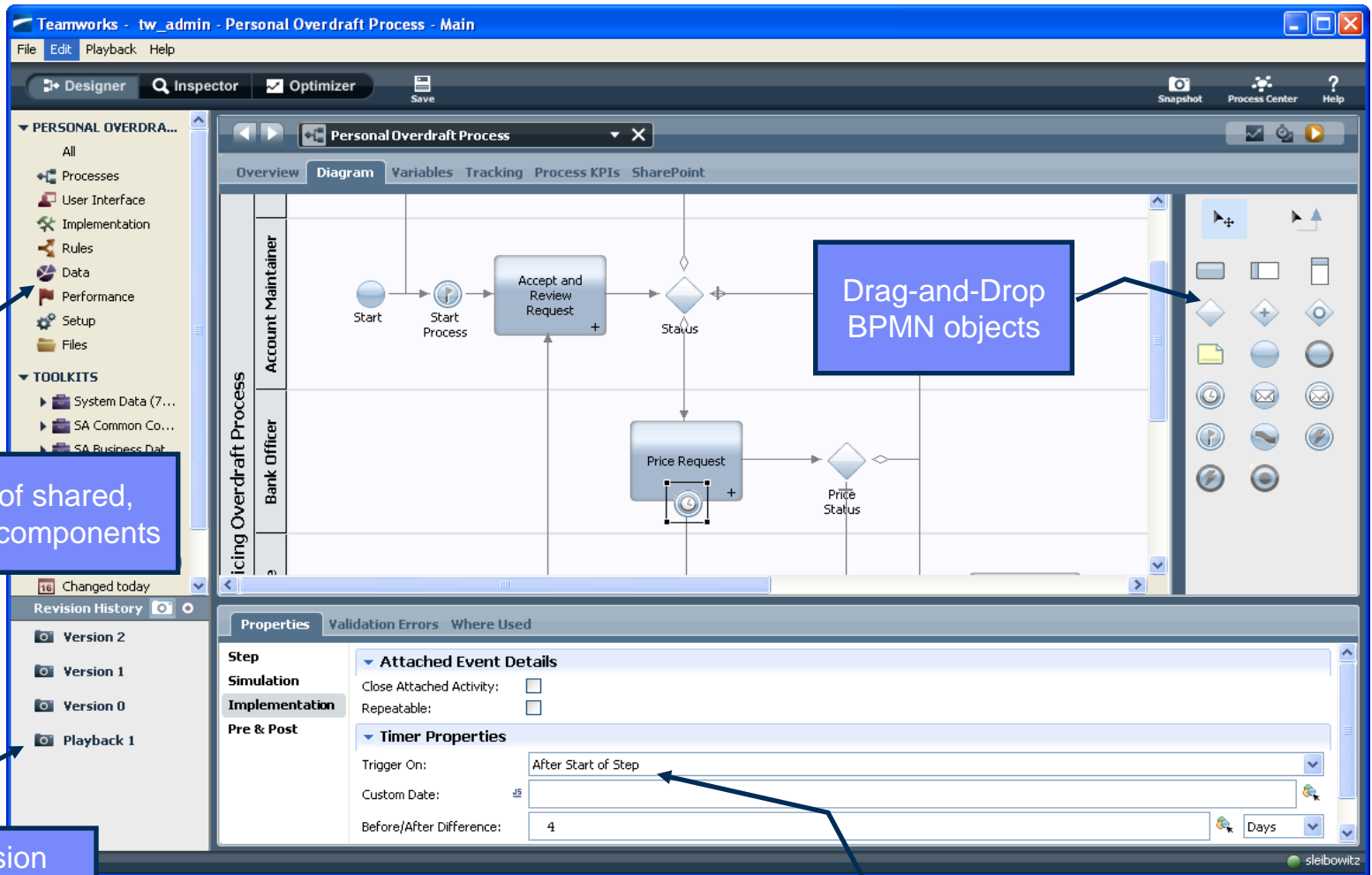
## Bring up the image

- Select “OK” for any pop-ups
- Once the image is up, move into full screen mode by selecting, Ctrl-Alt-Enter
- You may begin your lab
- Please see a specialist, if you have any problems with the labs



# IBM Business Process Manager

# BPM - Build from Scratch Lab introduces Process Designer



Library of shared, reusable components

Full Version History with Rollback

Define behavior through "Property Sheets"



## BPM Process Portal Lab – what you'll see

- IBM BPM Process Portal provides
  - A simple, business-friendly Inbox
  - Sophisticated dashboards
  - With zero development effort
- Business leaders/users have business visibility into process work
- Business owners can build reports without intervention of IT

The screenshot displays the IBM BPM Process Portal interface. On the left, a navigation menu (labeled 1) includes sections for 'My Tasks' (Inbox, History, Help Requests, Alerts) and 'My ScoreBoards' (My Performance, My Team Performance, Process Performance, SLA Overview, Ad Hoc Reports). The top header (labeled 2) shows the IBM logo, 'Process Portal', and user information: 'Welcome, Internal TW Admin user | Help | Preferences | Log Off'. The main area (labeled 3) is the 'Inbox' section, featuring a search bar, 'Organize by Task', and 'Show Search' buttons. Below the search bar is a table of process instances (labeled 4).

Instance Name	Process Definition	Instance Due Date	Task Subject	Task Priority	Task Due Date	Run
<input type="checkbox"/> zSetup - Create Inflight Data_template:253	Create Inflight Data	Jul 6, 2011 12:29:16 AM	Instance Generation Error - Order Fulfillment	Normal	Jun 22, 2011 1:29:41 AM	
<input type="checkbox"/> zSetup - Create Inflight Data_template:255	Create Inflight Data	Jul 6, 2011 12:29:17 AM	Instance Generation Error - Order Fulfillment	Normal	Jun 22, 2011 1:30:32 AM	
<input type="checkbox"/> Execute Instance:254	Create Inflight Data	Jul 6, 2011 12:29:17 AM	Task: Extend Perf Server Times (2072.307)	Normal	Jun 22, 2011 1:35:47 AM	
<input type="checkbox"/> Order: iPhone 3GS (256)	Order Fulfillment	Jun 26, 2011 12:30:31 AM	Select Vendor Quote, Order 256-iPhone 3GS	Normal	Jun 22, 2011 1:36:46 AM	
<input type="checkbox"/> Order: Garmin 350 GPS (258)	Order Fulfillment	Jun 26, 2011 12:30:34 AM	Select Vendor Quote, Order 258-Garmin 350 GPS	Normal	Jun 22, 2011 1:36:54 AM	

# BPM Simulation Lab – what you'll see

- How to run simulations
- Analysis of simulated or historical performance data
- Optimize Processes with color coded Heat Maps
- Drill down for details

The screenshot displays the IBM BPM Simulation Lab interface for the 'Order Fulfillment' process. The interface is divided into several sections:

- Top Bar:** Includes 'Designer', 'Inspector', and 'Optimizer' tabs. The 'Optimizer' tab is active and highlighted with a red box (1).
- Left Panel:** Contains 'Analysis Scenarios' and 'Heatmap Settings'. The 'Visualization mode' is set to 'Execution Time' (2).
- Central Diagram:** Shows a process flow with activities: 'Start', 'Create Order', 'Submit Response', 'Manager Review?', 'Review Response', and 'End'. Each activity is highlighted with a red box (3) and labeled with 'Execution Time: 100% violations (100/100)'. A decision diamond 'Manager Review?' has 'Yes' and 'No' paths.
- Right Panel:** Includes 'Smart Start', 'Hotspots', 'Participant Groups', and 'Scenario Scope'. The 'Hotspots' section shows 'Manager Review' and 'Review Response' with red bars (5).
- Bottom Panel:** Contains 'Live Reports' and 'Analysis Reports'. The 'Summary for Process "Order Fulfillment"' section includes:
  - Instance Duration Trend:** A line graph showing duration over time (4).
  - Instance Duration Histogram:** A bar chart showing the distribution of instance durations (4).
  - Users also worked on:** A pie chart showing the distribution of users (4).
- Bottom Right:** 'Recommendations' section with instructions like 'Select a haloed element' and 'Investigate a hotspot' (6).

# WebSphere Operational Decision Management Rules & Events

## Different Requirements, Different Types of Decisions

1. Provide more detailed coverage pricing, in real-time, and to make it dependent on a wide-array of business data.

- ✓ **Make business decisions across multiple applications**
- ✓ **Return a fixed-set of information**
- ✓ **Must be easy-to-use but have sophisticated governance**



**Business Rules**

2. Follow-up on potential customers who have declined a quote from any channel (web, call center, office) a certain number of times, and are not yet customers.

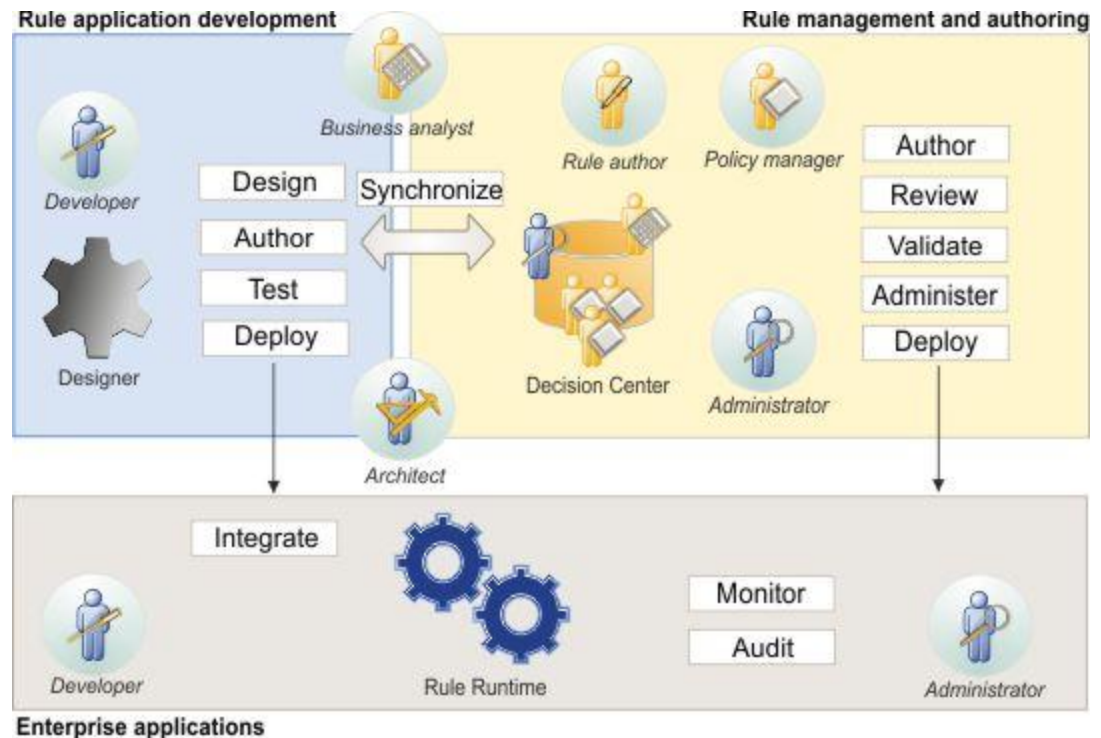
- ✓ **Detect events across multiple applications**
- ✓ **Decision criteria is time-based**
- ✓ **Dependency on occurrence, and absence, of events**



**Event Rules**

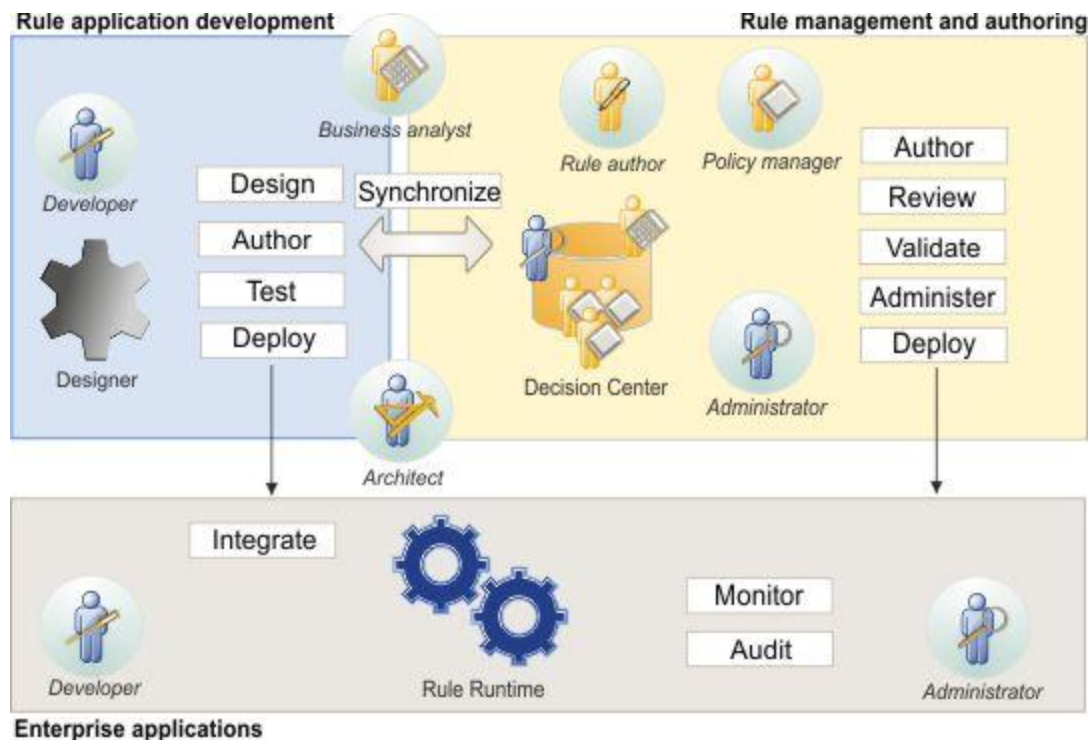
## WODM Events Lab – What you'll see...

- Introduce the Decision Center - Components including:
- Events, Actions, Business Objects, Filters, Event Rules
- Create, Modify, Review and Validate Event Rules
- Use Business Space to Trigger, Test and Replay
- Event Governance



## WODM Rules Lab – What you'll see...

- Business Rule Management
- Modifying Rules
- Validating Rules
- Auditing of which rules were fired



# Rational Automation Framework for WebSphere

## What goes into RAFW?

### **Build Forge** *(Rational Automation Framework)*

- Automates Tasks
- Scheduling
- Notifications
- Auditability
- Visibility
- Consolidation & Standardization
- Role-based Security

+

### **Rational Automation Framework for WebSphere**

- Library of 500+ commonly used tasks to administer WAS and Portal
- Environment Generation Wizard
- Extensive help information
- Predefined Automation Library elements



## Rational Automation Framework for WebSphere (RAFW)

- Customizable Framework for the WebSphere Family of products that delivers...
  - Automated Configuration change management
  - Application deployment automation
  - WebSphere product installation & patching automation
- The Framework strengths are...



### Accuracy

“Data Driven” - RAFW maintains normalized configuration data

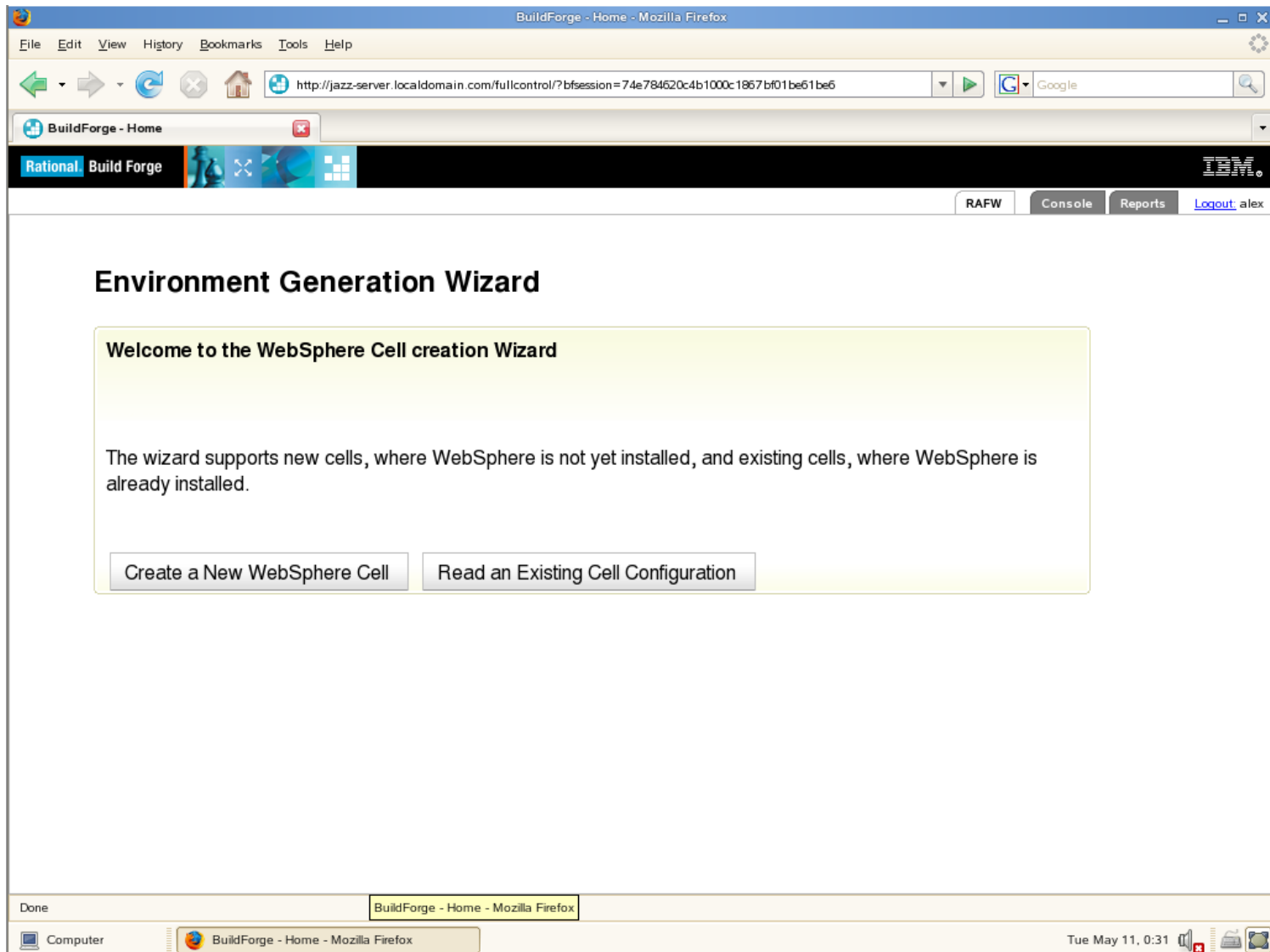
### Reliability

Apply the right data to the right WebSphere environment

### Consistency

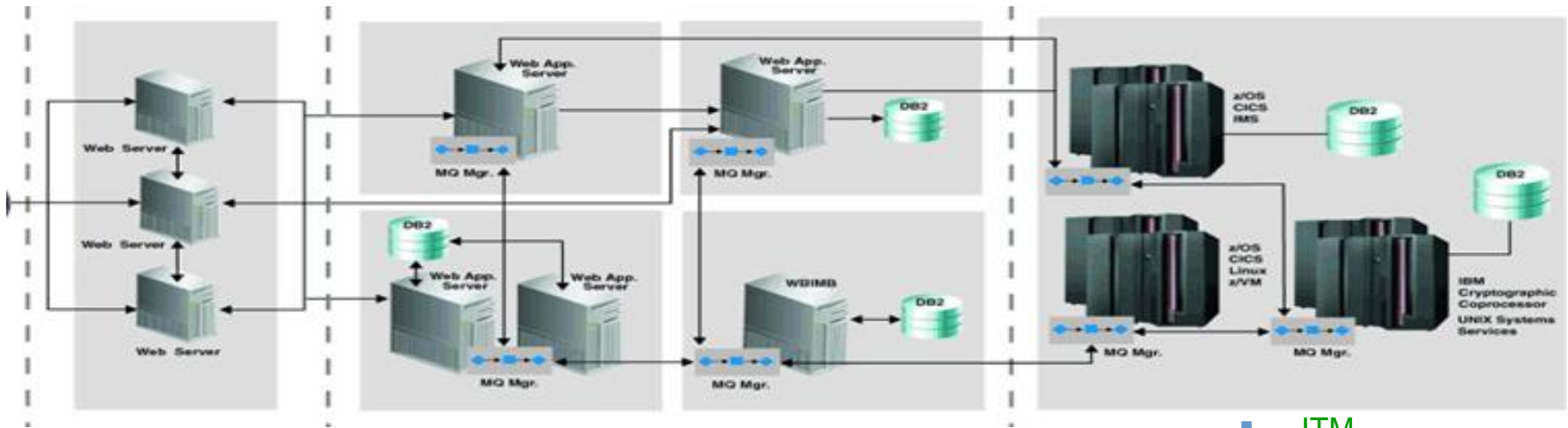
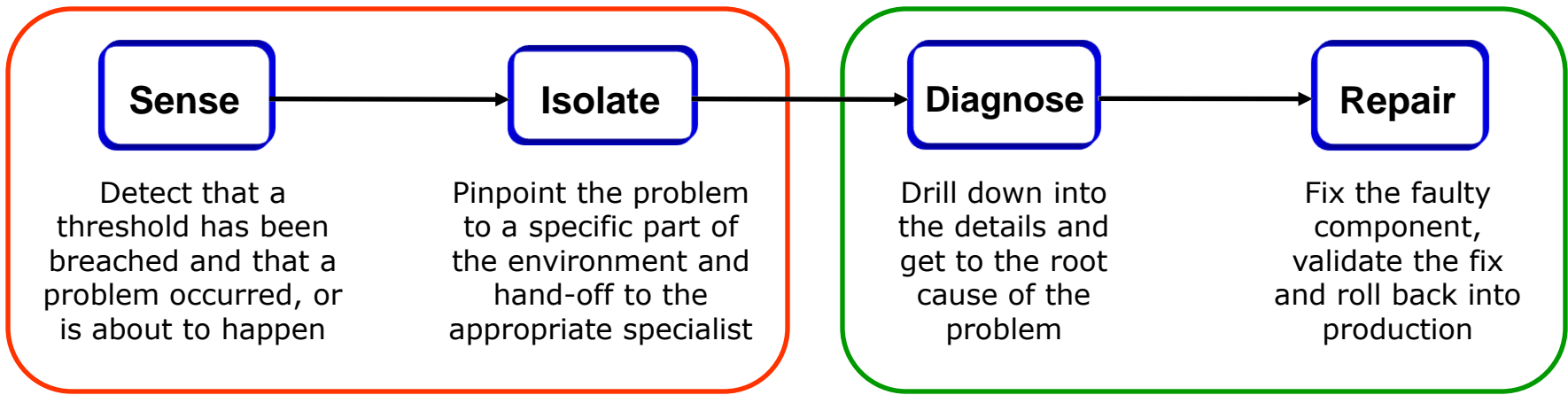
Apply data in repeatable manner to WebSphere environments

# Screen capture of RAFW Environment Wizard



# Tivoli Composite Application Manager for Application Diagnostics

# Application Performance Management Workflow

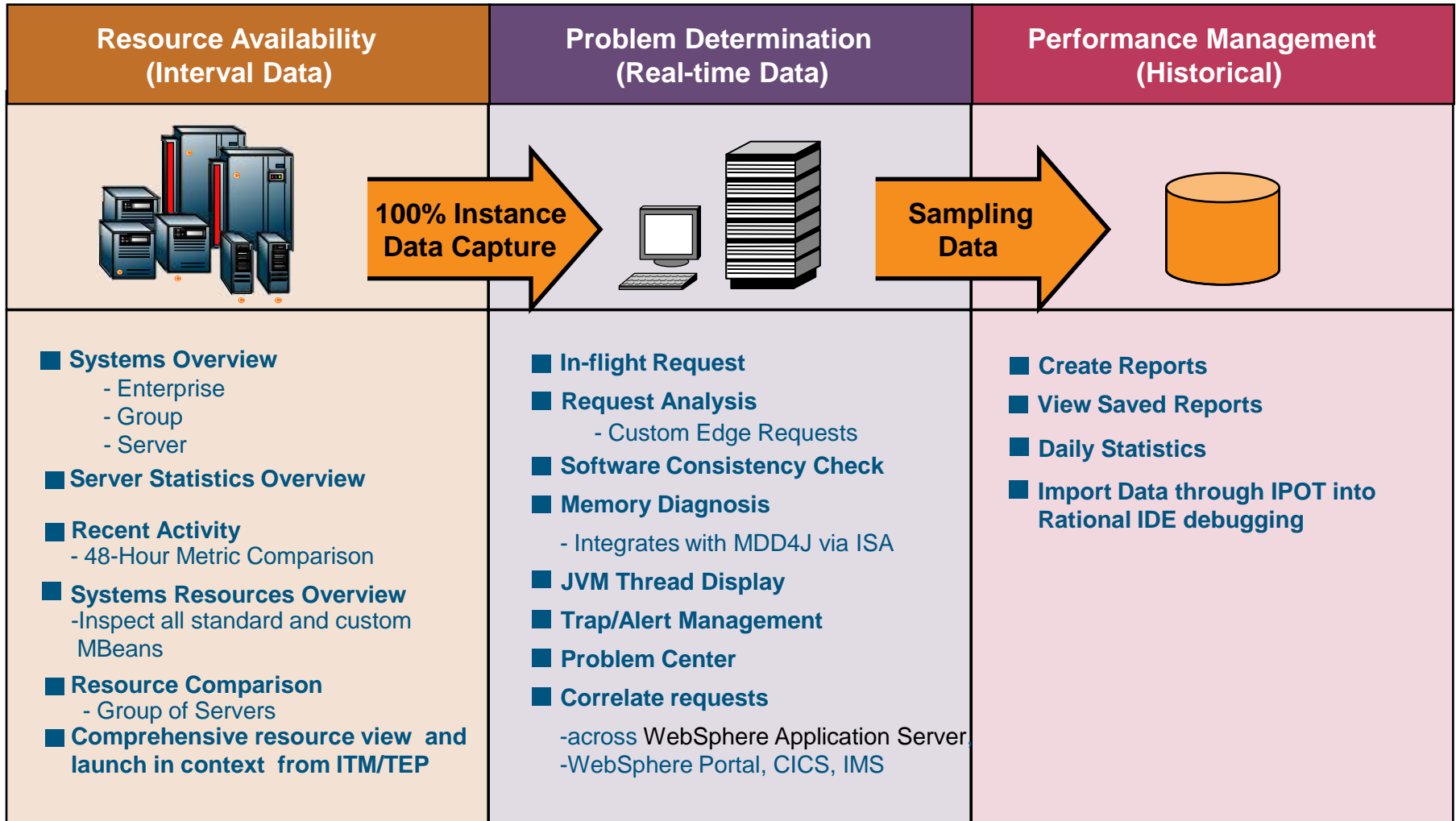


ITCAM for Transactions

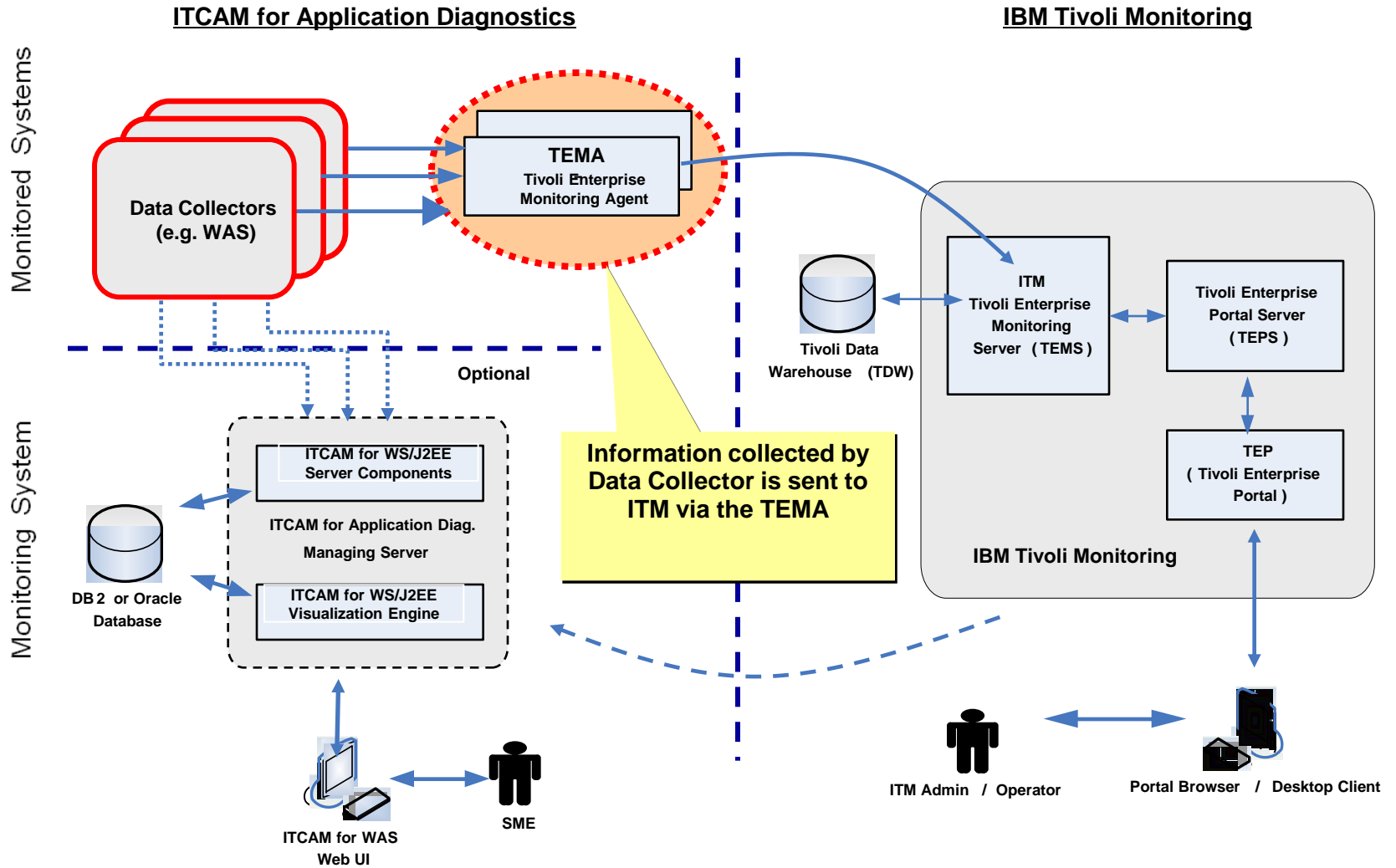
Deep-dive tools

- ITM
- ITCAM for AD
- ITCAM for SOA
- OMEGAMONS

# IBM Tivoli Composite Application Manager for Application Diagnostics Functional Overview



# Architecture



And now for the “Labs”

IBM Software

# Impact2012

The Premier Conference for Business and IT Leadership

**Innovate. Transform. Grow.**

April 29 – May 4 Las Vegas, NV



# Thank You

- Lab Books are limited - Morning Sessions please return the Lab Books
- Please fill out the Technology Ballot
- Wiki is at [IBMBPMatWork.com](http://IBMBPMatWork.com)

WebSphere. software

